

AGENDA

SOUTH CAROLINA WORKERS' COMPENSATION COMMISSION

1333 Main Street, 5th Floor
Columbia, South Carolina 29201

May 21, 2012 – 10:30 a.m.

Commission Hearing Room A

This meeting agenda was posted prior to the meeting and proper advance notice was made to all concerned parties in compliance with requirements in the Freedom of Information Act.

PUBLIC HEARING

1. CALL TO ORDER *CHAIRMAN BECK*
2. PROPOSED CHANGE TO REGULATION 67-706 (R 4283) (Tab 1) *CHAIRMAN BECK*
3. PUBLIC COMMENT PERIOD
4. ADJOURNMENT *CHAIRMAN BECK*

BUSINESS MEETING

1. CALL TO ORDER *CHAIRMAN BECK*
2. APPROVAL OF AGENDA OF BUSINESS MEETING of May 21, 2012 *CHAIRMAN BECK*
3. APPROVAL OF MINUTES OF BUSINESS MEETING of April 16, 2012 (Tab 2) *CHAIRMAN BECK*
4. RESOLUTION – RECOGNITION OF SERVICE COMMISSIONER G. BRYAN LYNDON, JR. (Tab 3) *CHAIRMAN BECK*
5. GENERAL ANNOUNCEMENTS *MR. CANNON*
6. APPLICATIONS FOR APPROVAL TO SELF-INSURE (Tab 4) *MR. SMITH*
7. DEPARTMENT DIRECTORS' REPORTS
Administration – Financial Report (Tab 5) *MS. GANTT*
Human Resources (Tab 6) *MS. FLOYD*
Information Services (Tab 7) *MS. HARTMAN*
Insurance & Medical Services (Tab 8) *MR. DUFFIELD*
Claims (Tab 9) *MR. LINE*
Judicial (Tab 10) *MS. HOLLMON*
8. EXECUTIVE DIRECTOR'S REPORT (Tab 11) *MR. CANNON*
9. OLD BUSINESS *CHAIRMAN BECK*
10. NEW BUSINESS *CHAIRMAN BECK*
11. COMMISSION/STAFF WORKSESSION *CHAIRMAN BECK*
12. EXECUTIVE SESSION *CHAIRMAN BECK*
13. ADJOURNMENT *CHAIRMAN BECK*

Table of Contents

1	Public Hearing - Proposed Change to Reg 67-706 (R4283) Oral Argument
2	Minutes
3	Resolution of Appreciation G. Bryan Lyndon, Jr.
4	Self-Insurance
5	Administration
6	Human Resources
7	Information Services
8	Insurance & Medical Services
9	Claims
10	Judicial
11	Executive Director's Report

State of South Carolina

1333 Main Street, 5th Floor
P.O. Box 1115
Columbia, S.C. 29202-1115



TEL: (803) 735-5700
FAX: (803) 737-5704

Workers' Compensation Commission

TO: Workers' Compensation Commissioners
FROM: Gary M. Cannon
DATE: May 17, 2012
RE: Public Hearing – Proposed Regulation 67-706 (R 4283) Oral Argument

Prior to the regular Business Meeting, a public hearing is scheduled to receive comment on the proposed amendments to Regulation 67-706 (Oral Argument). The proposed changes, found in the attached document R 42893, add subsection "D". The new language requires parties to be present in the designated waiting area of the Commission no later than 30 minutes prior to the time for which their cases are scheduled to be argued before the Appellate Panel.

Background

At the January 17, 2012 Business Meeting, the Commission adopted a timeline for promulgation on the proposed change to Regulation 67-706 (R 4283) Oral Argument. The timeline included the date of May 21, 2012 for the Public Hearing to receive public comment on the proposed change to Regulation 67-706 (R 4283).

The Commission approved a motion at the April 27, 2009 Commission Business Meeting that a regulation be drafted for parties to show up and sign in thirty minutes prior to their Appellate Hearing. No action was taken by the Commission to proceed with publishing the Notice of Drafting. At the September 19, 2011 Commission Business Meeting, Chairman Beck instructed staff to initiate the process to publicize the Notice of Drafting. The Notice of Drafting was published in the December 23, 2011 *State Register*.

The Commission approved the language of the Proposed Regulation at the February 21, 2012 Commission Meeting. The attached Proposed Regulation was published in the March 23, 2012 *State Register*. The deadline to receive written comments was 5:00 p.m. on Monday, April 23, 2012.

Written Comments

None.

Agency Name: Workers' Compensation Commission
Statutory Authority: 42-3-30 and 42-17-50
Document Number: 4283
Proposed in State Register Volume and Issue: 36/3
Status: Proposed
Subject: Oral Argument

History: 4283

<u>By</u>	<u>Date</u>	<u>Action Description</u>	<u>Jr. Res. No.</u>	<u>Expiration Date</u>
-	03/23/2012	Proposed Reg Published in SR		

**WORKERS' COMPENSATION COMMISSION
CHAPTER 67**

Statutory Authority: 1976 Code Sections 42-3-30 and 42-17-50

67-706. Oral Argument.

Preamble:

The South Carolina Workers' Compensation Commission proposes to amend Regulation 67-706, Oral Argument. The Notice of Drafting regarding this regulation was published on December 23, 2011 in the *State Register*.

Section by Section Discussion

The Commission is proposing to amend regulation 67-706 to include the addition of a subsection "D" which would require parties to be present in the designated waiting area of the Commission no later than 30 minutes prior to the time for which their cases are scheduled to be argued. Any party who fails to comply with this regulation is subject to a \$100 fine, except for good cause shown. The requirements of this regulation must be set forth in bold type on the hearing notice. The proposed amendment will assist the Commission in maintaining an efficient schedule for its docket of appellate hearings.

Notice of Public Hearing and Opportunity for Public Comment:

Interested persons may submit written comments to the South Carolina Workers' Compensation Commission, attention Gary M. Cannon, Executive Director, Post Office Box 1715, Columbia, South Carolina 29202 1715. To be considered, comments must be received no later than 5:00 p.m. on Monday, April 23, 2012.

The South Carolina Workers' Compensation Commission has scheduled a public hearing for May 21, 2012 at 10:30 a.m. in Hearing Room A at the SC Workers' Compensation Commission, 1333 Main Street, Columbia, SC 29202.

Preliminary Fiscal Impact Statement:

The fiscal impact of the proposed changes to this regulation is \$0.

Statement of Need and Reasonableness:

The Workers' Compensation Commission is the regulatory agency of the State of South Carolina responsible for overseeing and administering the South Carolina Workers' Compensation Act, SC Code Ann. § 42-1-10 et seq. (1976). The Commission shall promulgate all regulations relating to the administration of the workers' compensation laws, and may conduct review and rehearing. § 42-3-30; § 42-17-50; R.67-706.

DESCRIPTION OF REGULATION: R.67-706. Oral Argument.

Purpose: Assists the Commission in maintaining an efficient schedule for its docket of appellate hearings.

Legal Authority: Section 42-3-30, Promulgation of rules and regulations by Commission and Section 42-17-50, Review and rehearing by Commission.

Plan for Implementation: The proposed regulation will take effect upon approval by the General Assembly and publication in the *State Register*.

DETERMINATION OF NEED AND REASONABLENESS OF THE PROPOSED REGULATION BASED ON ALL FACTORS HEREIN AND EXPECTED BENEFITS:

The Commission determined a need for considering the amendment to the regulation April 2009

DETERMINATION OF COSTS AND BENEFITS:

There are no additional costs to the agency related to the proposed change to the regulation. The benefit of the proposed change is that it will assist the Commission in maintaining an efficient schedule for its docket of appellate hearings.

UNCERTAINTIES OF ESTIMATES:

None.

EFFECT ON ENVIRONMENT AND PUBLIC HEALTH.

None.

DETRIMENTAL EFFECT ON THE ENVIRONMENT AND PUBLIC HEALTH IF THE REGULATION IS NOT IMPLEMENTED:

None.

Statement of Rationale:

The Commission is proposing to include the addition of a subsection "D" which would require parties to be present in the designated waiting area of the Commission no later than 30 minutes prior to the time for which their cases are scheduled to be argued. The amendment of this regulation will assist the Commission in maintaining an efficient schedule for its docket of appellate hearings.

~~Indicates Matter Stricken~~

Indicates New Matter

Text:

67-706. Oral Argument.

A. Each party is permitted ten minutes for oral argument. The appellant is permitted three minutes for reply.

B. If both parties have appealed, each party is permitted ten minutes for oral argument, and each party is permitted three minutes for reply.

C. A party may request additional time for argument by attaching a motion to the Form 30. The Commission will issue an order before the case is set for argument.

D. Parties must sign in and be present in the designated waiting area of the Commission no later than 30 minutes prior to the time for which their cases are scheduled to be argued. Any party who fails to comply with this regulation is subject to a \$100 fine, except for good cause shown. The requirements of this regulation must be set forth in bold type on the hearing notice.

THE
SOUTH CAROLINA WORKERS' COMPENSATION COMMISSION
BUSINESS MEETING

Monday, April 16, 2012

A Business Meeting of the South Carolina Workers' Compensation Commission was held in Hearing Room A of the Workers' Compensation Commission on Monday, April 16, 2012 at 10:30 a.m. The meeting agenda was posted prior to the meeting and proper advance notice was made to all concerned parties in compliance with requirements in the Freedom of Information Act. The following Commissioners were present:

T. SCOTT BECK, INTERIM CHAIRMAN
SUSAN S. BARDEN, VICE CHAIR
GENE MCCASKILL, COMMISSIONER
G. BRYAN LYNDON, COMMISSIONER
ANDREA C. ROCHE, COMMISSIONER
AVERY B. WILKERSON, JR., COMMISSIONER
DERRICK L. WILLIAMS, COMMISSIONER

Present also were Gary M. Cannon, Executive Director, Virginia Crocker, Judicial Director, Greg Line, Claims Director, Grant Duffield, Insurance and Medical Services Director, Betsy Hartman, DSIT, Amanda Underhill, Senior Application Analyst, W.C. Smith, Self-Insurance Director, Wayne Ducote, Coverage Director, and Garry Smith, Compliance Director. Visitors present were: Kristian Cross, Collins & Lacy, P.C.; AnnMargaret McCraw, Midlands Orthopaedics/SC Orthopaedic Association; and Marti Blucstein, Injured Workers' Advocates.

Chairman Beck called the meeting to order at 10:30 a.m.

AGENDA

Commissioner Barden moved that the agenda be approved. Commissioner Williams seconded the motion, and the motion was approved.

APPROVAL OF MINUTES – BUSINESS MEETING OF MARCH 19, 2012

Commissioner Williams moved that the minutes of the Business Meeting of March 19, 2012 be approved. Commissioner Lyndon seconded the motion, and the motion was approved.

APPROVAL OF MINUTES – SPECIAL BUSINESS MEETING OF APRIL 9, 2012

Commissioner Roche moved that the minutes of the Special Business Meeting of April 9, 2012 be approved. Commissioner Williams seconded the motion, and the motion was approved.

GENERAL ANNOUNCEMENTS

There were no general announcements.

APPLICATIONS FOR APPROVAL TO SELF-INSURE

Self-insurance applications were presented by W.C. Smith, Self-Insurance Director. Eleven prospective members of one (1) fund were presented to the Commission for approval. The applications were:

SC Home Builders SIF

Carter & Gordon, LLC
Casas De Flores, Inc.
Codie Bolin dba Codie's Custom Home Repair
D.F. Lundgren Construction, LLC
Edward's Construction SC, Inc.
Filinski, Inc.
Keeney Construction, LLC
Noe's Painting, Inc.
Palmetto Pool Plastering
Steinberg Heating & Air Conditioning, Inc.
Task Services, Inc.

After examination of the applications, it was determined that each complied with the Commission's requirements and each was recommended for approval. Commissioner Wilkerson made the motion to approve the applications to self-insure, and Commissioner Lyndon seconded the motion. The motion was unanimously approved.

DEPARTMENT DIRECTORS' REPORTS

The Department Directors presented their reports which were also submitted to the Commission in written form.

Administration Department

Diana Gantt presented the Summary of Revenues and Expenditures for the period ending March 31, 2012. The benchmark for March is 75%. The Commission's revenues are at 69.42%, and expenses are at 73%. The salaries for March exceed the budgeted benchmark due to three payrolls being posted in the month.

Human Resources Department

Cathy Floyd presented the Human Resources report for the period of March 14, 2012 through April 10, 2012. Seventy three applications were received for the vacant Program Manager II position, Information Technology Department Director. Ms. Floyd announced the 2012 Wellness Walk at Riverfront Park sponsored by Prevention Partners is scheduled for Friday, April 20, 2012.

Information Services

Betsy Hartman presented the Information Services Department's report. Work continues on the Claims EDI Release 3 Upgrade. Additional information will be added to the agency's website to encourage companies to partner with testing. She reported DSIT has approved a new line of service for iPads.

Insurance & Medical Services

Grant Duffield presented the Insurance & Medical Services Department's report. Year to date, the Compliance Division has collected \$238,196 in fines which represents 96% of prior year's accrual of \$247,523.

Mr. Duffield reported employees in Insurance and Medical Services and Judicial Department began cross training in several positions.

Mr. Duffield announced Medical Services has developed a new online medical bill dispute process to assist users in filing and resolution of workers' compensation medical billing issues.

Claims Department

Greg Linc presented the Claims Department's report. There were 469 fines for the month of March which is down from assessing 590 fines for the month of February. The dollar amount of the fines assessed for the month of March is \$103,950 which is down from assessing \$130,050 for the month of February.

Judicial Department

Virginia Crocker presented the Judicial Department's report. This was received as information.

EXECUTIVE DIRECTOR'S REPORT

Gary Cannon, Executive Director, presented his report which was also submitted to the Commission in written form. He pointed out the following highlights from his report:

Employee Meetings/Staff Training

Mr. Cannon reported the All Employee meetings continue to be held bi-monthly with the most recent meeting on March 22, 2012. Five employees participated in the employee focus group on March 28. Employees in the Insurance and Medical Services Department and the Judicial Department began cross training in several positions. The focus of the effort is to expose the employees to various business processes and activities in the respective department.

Claims Administration Workshop for Workers' Compensation Claims Adjusters

Mr. Cannon announced sixty-four individuals have pre-registered for the Claims Administration Workshop for Workers' Compensation Claims Adjusters scheduled for May 3, 2012 in Rock Hill.

Senate Committee Hearing on H3111

Mr. Cannon reported the legislation is still pending.

Workers' Compensation Advisory Committee

Mr. Cannon reported the statewide Workers' Compensation Commission Advisory Committee met on March 23, 2012. The Committee received comments from eleven stakeholders on issues for the Committee to consider in this year's report to the General Assembly.

SC Bar Diversity Clerkship Program

Mr. Cannon reported that he, Chairman Beck, and Commissioner Williams interviewed seven first year law school students on April 9 to select a law clerk to work with the Agency for six weeks this summer.

Surgical Implant Advisory Committee

Mr. Cannon said that a meeting of the Surgical Implant Advisory Committee has been postponed until the Center of Medicaid and Medicare Services (CMS) provides additional information regarding implants.

Website

Mr. Cannon reported notice was posted on the website on April 6 for interested persons to sign-up to receive updates and be informed of activities at the Commission.

Strategic Planning Session

Mr. Cannon reminded the Commissioners about the strategic planning session scheduled for May 21, 2012 from 1:00 p.m. to 4:00 p.m. in the Commissioners' Conference Room.

OLD BUSINESS

A. SC Department of Vocational Rehabilitation

Jim Williams from the SC Department of Vocational Rehabilitation talked about initiatives and partnership between SCWCC and SCVRD.

- 1) SCVRD has web presence on SCWCC's website with contact information and links to SCVRD literature.
- 2) The Commission has provided Ms. Michelle Prevost, SCVRD Case Manager, work space and a computer to access the Commission's database. Ms. Prevost is working in the Commission offices one day per week.
- 3) SCVRD staff is working with IT staff to develop a referral interface database portal which will assist with claimant referrals.

Mr. Cannon referred the Commissioners to a report provided by Ms. Prevost. On March 30 she mailed 40 letters to potential referrals in Richland and Lexington Counties and received 19 responses. Mr. Cannon said the database portal access will expand services to Vocational Rehabilitation offices statewide. There was discussion on SC Code § 42-19-40 and the statutory obligation that Commission records shall not be public. Mr. Cannon stated the Commission is not in violation and that the Commission has the responsibility to establish a referral program for SCVRD.

NEW BUSINESS

A. Request to Change August Business Meeting Date

Mr. Cannon presented a recommendation to change the date of the August 2012 Commission Business Meeting. The National Workers' Compensation Judiciary College is scheduled for August 19-22, 2012, in Orlando, FL. Chairman Beck, Commissioner Wilkerson, Commissioner McCaskill, and Mr. Cannon have applied for scholarships to attend the meeting.

Motion to Change August 2012 Business Meeting Date

Commissioner Barden moved to change the August 2012 Business Meeting date from August 20 to August 27, 2012, which was duly seconded by Commissioner Roche. The vote was taken, and the motion carried. Chairman Beck requested Mr. Cannon provide the date change to the Commissioners' administrative assistants.

ADJOURNMENT

Commissioner Williams made the motion to adjourn. Commissioner Wilkerson seconded the motion, and the motion was approved.

The April 16, 2012 meeting of the South Carolina Workers' Compensation Commission adjourned at 10:46 a.m.

Reported May 21, 2012

Kim Ballentine, Office of the Executive Director

RESOLUTION OF APPRECIATION

to

G. BRYAN LYNDON, JR.

SOUTH CAROLINA WORKERS' COMPENSATION COMMISSION

WHEREAS, Commissioner G. Bryan Lyndon, Jr. was appointed in 1995 by Governor David M. Beasley to serve the remainder of a six-year term ending in 1996; he was reappointed by Governor Beasley to a six-year term July 1, 1996 expiring in June 2002; and,

WHEREAS, Commissioner Lyndon was appointed in June 2003 by Governor Sanford to fill a term expiring in June 2004; and,

WHEREAS, Commissioner Lyndon was appointed by Governor Sanford to serve a six-year term July 1, 2004 - June 30, 2010; and,

WHEREAS, Commissioner Lyndon continued to serve the Commission, stakeholders in the workers' compensation system, claimants, and the citizens of South Carolina in a quasi-legislative and judicial capacity until April 25, 2012; and,

WHEREAS, Commissioner Lyndon was known by the claimants, attorneys, employers and insurance carrier representatives who appeared before him as being a fair and consistent judge of cases relying on the merits of the case to render a decision; and

WHEREAS, Commissioner Lyndon in his role on the Commission in a quasi-legislative capacity was contemplative, deliberate and judicious in his participation of the decisions of issues before the Commission having great impact on the overall system; and

WHEREAS, on April 25, 2012 after fifteen (15) years of service on the Commission, Commissioner Lyndon retired from the SC Workers' Compensation Commission to begin a new chapter in his life pursuing his favorite personal interests, which include but are not limited to, spending time with his family, following University of Georgia Bulldogs sports, playing golf, researching his family heritage, expanding his vast knowledge through reading and listening to books on tape; and,

NOW, THEREFORE, BE IT RESOLVED, on this 21st day of May, in the Year 2012, the South Carolina Worker's Compensation Commission commends and offers great appreciation for his years of dedicated service to the SC Workers' Compensation Commission and wishes all the best as he begins a new chapter in his life.

Approved by the SC Workers' Compensation Commission May 21, 2012.

F. Scott Beck, Chairman

Derrick Williams, Commissioner

Susan Barden, Vice-Chairman

Gene McCaskill, Commissioner

Andrea C. Roche, Commissioner

Melody James, Commissioner

Avery B. Wilkerson, Jr., Commissioner

INTEROFFICE MEMORANDUM

TO: GARY CANNON, EXECUTIVE DIRECTOR
FROM: DIANA GANTT, DIRECTOR OF ADMINISTRATION
SUBJECT: FINANCIAL REPORT PERIOD ENDING APRIL 30, 2012
DATE: 5/26/2012

The Summary of Revenues and Expenditures for the period ending April 30, 2012, is attached.

- April is the 10th Fiscal Month of FY12.
- There were 62 payments made to vendors, travelers, and other State Agencies.
- The benchmark for March is 83.33%. The Commission's revenues are at 78.16% and expenses are at 79%.
- The following is a summary of each department expenditure benchmarks:

General Fund: Total Expenses are at 81%.

Earmark Fund:

Commissioners -

- Total expenditures are at 77% of budget.

Administration -

- Overall the expenditures are 68% of budget.

Claims -

- Expenditures are at 82% of budget.

Insurance & Medical

- Total expenditures are at 75% of budget.

Judicial -

- Total expenditures are at 76% of budget.

Activity Report from the Procurement Office:

	MTD	YTD
SCEIS Shopping Carts	2	8
Vendors Contacted for Price Quotes	17	133
Visa Procurement Card Orders Placed	11	55
SC Dept of Corrections Orders Placed	0	10
Staples Orders Placed	5	47
State Leased Vehicles taken for Service	2	25
State Reports filed by Procurement Officer	5	34

Mail Room Activity:

	MTD	YTD
Files Copied for Outside Parties	234	2394
Pages Copied	1639	9599

South Carolina Workers' Compensation Commission
Summary of Revenues and Expenditures
2011 - 2012 Budget
April 30, 2012

	Budget	FY To Date	Benchmark	83.33%
STATE APPROPRIATIONS				
General Appropriation	<u>\$ 1,763,619</u>	<u>\$ 1,409,687.50</u>		83.33%

<u>Account Description</u>	<u>Appropriation</u>	<u>Expenditure</u>	<u>Balance</u>	<u>% Expended</u>
Personal Services	\$ 1,329,429	\$ 1,118,161	\$ 211,268	84.1%
Other Operating Expenses	-	-	-	0.0%
Employer Contribution	434,190	318,849	115,341	73.4%
Total	<u>\$ 1,763,619</u>	<u>\$ 1,437,011</u>	<u>\$ 326,608</u>	<u>81.5%</u>

OTHER APPROPRIATIONS

EARMARKED	Budgeted Revenues	Received thru 4/30/12	% Received
Training Conference Registratin Fee	\$ 1,000	\$ 5,595	559.50%
Sale of Publication and Brochures	8,000	5,370	67.13%
Workers' Comp Award Review Fee	75,000	61,200	81.60%
Sale of Photocopies	95,000	76,218	80.23%
Workers' Compensation Filing Violation Fee	1,891,000	1,430,526	75.65%
Sale of Listings and Labels	30,000	21,703	72.34%
Workers' Comp Hearing Fee	600,000	476,350	79.39%
Insurance Reserve Refund (Prepaid Legal)		33,238	
Earmarked Funds - Original Authorization	<u>\$ 2,700,000</u>	<u>\$ 2,110,199</u>	<u>78.16%</u>
Increase Authorization	418,815		
Increase Authorization - BD100	193,675		
Total Earmarked Revenues + Fund Balance	<u>\$ 3,312,490</u>		

<u>Account Description</u>	<u>Appropriation</u>	<u>Expenditure</u>	<u>Balance</u>	<u>% Expended</u>
Personal Services	\$ 1,544,590	\$ 1,152,314	\$ 392,676	74.6%
Taxable Subsistence	72,350	51,717	20,633	71.5%
Other Operating Expenses	1,246,966	946,390	300,576	75.9%
Employer Contribution	448,184	387,395	60,789	86.4%
Total Earmarked	<u>\$ 3,312,490</u>	<u>\$ 2,537,817</u>	<u>\$ 774,673</u>	<u>76.6%</u>

COMPUTER FUNDS CARRIED FORWARD

Computer Services - Carry forward	<u>\$ 9,031</u>	<u>\$ 2,475</u>	<u>\$ 7,056</u>	<u>24.9%</u>
TOTAL OTHER APPROPRIATIONS	<u>\$ 3,322,421</u>	<u>\$ 2,540,292</u>	<u>\$ 782,129</u>	<u>76.5%</u>

South Carolina Workers' Compensation Commission
2011 - 2012 Budget
 April 30, 2012

Consolidated

Year-To-Date 83.33%

	Original Budget	Budget Amendments	Amended Budget	Expended April	Year to Date	%	Encumb	Balance
Commissioners								
Salaries	\$ 1,142,594	\$ -	\$ 1,142,594	\$ 50,222	\$ 948,866	83%	\$ -	\$ 20,633
Other Operating Expenditures								
Total Contractual Services	206,300	-	206,300	19,969	159,528	78%	-	46,373
Total Supplies & Materials	17,499	-	17,499	1,271	16,077	92%	-	1,422
Total Fixed Charges	146,102	-	146,102	11,974	119,785	82%	-	26,317
Total Travel	80,450	-	80,450	2,478	57,021	71%	-	23,429
Total Other Operating Exp	450,351	-	450,351	35,692	352,411	78%	-	97,340
Total Commissioners	\$ 1,592,945	\$ -	\$ 1,592,945	\$ 85,908	\$ 1,301,677	82%	\$ -	\$ 117,973
Administration								
Salaries	\$ 458,224	\$ 91,034	\$ 549,258	\$ 18,883	\$ 379,472	69%	\$ -	\$ 169,836
Other Operating Expenditures								
Total Contractual Services	154,027	5,000	159,027	15,530	142,542	73%	-	59,105
Total Supplies & Materials	19,803	-	19,803	1,188	13,357	67%	-	6,446
Total Fixed Charges	118,095	12,000	130,095	9,410	99,119	77%	-	28,976
Total Travel	12,490	5,500	17,990	25	3,789	54%	-	8,202
Total Equipment	-	-	-	-	-	0%	-	-
Total Other Operating Exp	344,415	21,500	365,915	26,303	262,805	72%	-	103,110
Total Administration	\$ 802,639	\$ 112,534	\$ 915,173	\$ 45,186	\$ 642,277	70%	\$ -	\$ 272,946
Claims								
Salaries	\$ 375,000	\$ -	\$ 375,000	\$ 15,718	\$ 312,487	83%	\$ -	\$ 62,513
Other Operating Expenditures								
Total Contractual Services	56,000	-	56,000	3,773	44,215	79%	-	11,790
Total Supplies & Materials	26,546	-	26,546	2,381	21,465	81%	-	3,087
Total Fixed Charges	73,725	-	73,725	6,333	61,348	83%	-	12,391
Total Travel	2,000	-	2,000	52	550	28%	-	1,550
Total Other Operating Exp	158,350	-	158,350	12,440	129,588	82%	-	28,791
Total Claims	\$ 533,350	\$ -	\$ 533,350	\$ 28,158	\$ 442,086	83%	\$ -	\$ 91,304
Insurance and Medical Services								
Salaries	\$ 458,368	\$ 14,950	\$ 473,318	\$ 19,142	\$ 343,734	73%	\$ -	\$ 109,590
Other Operating Expenditures								
Total Contractual Services	53,050	9,500	62,550	4,301	42,960	69%	-	19,590
Total Supplies & Materials	15,725	7,000	22,725	1,362	17,490	77%	-	5,300
Total Fixed Charges	55,520	8,120	63,640	4,383	46,750	73%	-	17,410
Total Travel	1,350	-	1,350	335	600	45%	-	749
Total Other Operating Exp	125,645	24,700	150,345	10,609	107,900	71%	-	43,037
Total Insurance and Medical Services	\$ 584,013	\$ 39,650	\$ 623,663	\$ 29,747	\$ 471,042	76%	\$ -	\$ 152,621
Judicial								
Salaries	\$ 378,608	\$ 26,985	\$ 405,593	\$ 14,033	\$ 317,694	78%	\$ -	\$ 88,909
Other Operating Expenditures								
Total Contractual Services	28,054	8,000	36,054	1,391	23,087	64%	-	12,967
Total Supplies & Materials	13,545	1,000	14,545	991	13,795	95%	-	790
Total Fixed Charges	63,116	3,000	66,116	5,575	52,997	80%	-	12,129
Total Travel	2,950	2,500	5,450	307	2,997	55%	-	2,453
Total Other Operating Exp	107,665	14,500	122,165	8,513	93,866	77%	-	28,299
Total Judicial	\$ 486,273	\$ 41,485	\$ 527,758	\$ 22,546	\$ 411,560	78%	\$ -	\$ 117,208
Totals By Departments								
Department Totals								
Commissioners	\$ 1,592,945	\$ -	\$ 1,592,945	\$ 85,908	\$ 1,301,677	82%	\$ -	\$ 117,973
Administration	802,639	112,534	915,173	45,186	642,277	70%	-	272,946
Claims	533,350	-	533,350	28,158	442,086	83%	-	91,304
Insurance & Medical	584,013	39,656	623,669	29,747	471,042	76%	-	152,621
Judicial	487,273	41,485	528,758	22,546	411,560	78%	-	117,208
Total Departmental Expend	\$ 4,000,000	\$ 198,675	\$ 4,198,675	\$ 212,144	\$ 3,268,583	78%	\$ -	\$ 752,057
Employee Contributions	662,374	-	662,374	34,735	706,244	80%	-	176,130
Total General & Encumbered Funds	\$ 4,662,374	\$ 198,675	\$ 4,861,049	\$ 246,879	\$ 3,974,827	78%	\$ -	\$ 928,187

South Carolina Workers' Compensation Commission
2011 - 2012 Budget
April 30, 2012

General Appropriation

	Original Budget	Budget Amendments	Amended Budget	Year-To-Date : 83.33%				
				Expended April	Year to Date	%	Encumb	Balance
Commissioners								
Salaries								
Chairman	\$ 115,567	\$ -	\$ 115,567	\$ 4,815	\$ 95,306	83%	\$ -	\$ 19,161
Commissioner	664,602	(79,170)	645,432	27,692	539,569	94%	-	105,863
Terminal Leave		19,170	19,170	-	19,170	100%	-	-
Classified Employees	250,075	-	250,075	12,128	242,104	83%	-	47,971
Total Commissioners	1,070,244	-	1,070,244	44,635	897,149	84%	-	-
Administration								
Salaries								
Director	\$ 94,152	\$ -	\$ 94,152	\$ 3,923	\$ 78,460	83%	\$ -	\$ 15,692
Classified Positions	44,825	-	44,825	1,868	37,354	83%	-	7,471
Total Administration	138,977	-	138,977	5,791	115,814	83%	-	23,163
Claims								
Salaries								
Classified Positions	\$ 67,000	\$ -	\$ 67,000	\$ 3,210	\$ 60,858	91%	\$ -	\$ 6,142
Total Claims	67,000	-	67,000	3,210	60,858	91%	-	6,142
Insurance and Medical Services								
Salaries								
Classified Positions	\$ 25,350	\$ -	\$ 25,350	\$ 1,056	\$ 21,125	83%	\$ -	\$ 4,225
Total Ins and Medical Svcs	25,350	-	25,350	1,056	21,125	83%	-	4,225
Judicial								
Salaries								
Classified Positions	\$ 27,858	\$ -	\$ 27,858	\$ 1,151	\$ 23,215	83%	\$ -	\$ 4,643
Total Judicial	27,858	-	27,858	1,151	23,215	83%	-	4,643
General Funds								
Department Totals								
Commissioners	\$ 1,070,244	\$ -	\$ 1,070,244	\$ 44,635	\$ 897,149	84%	\$ -	\$ 173,095
Administration	138,977	-	138,977	5,791	115,814	83%	-	23,163
Claims	67,000	-	67,000	3,210	60,858	91%	-	6,142
Insurance & Medical	25,350	-	25,350	1,056	21,125	83%	-	4,225
Judicial	27,858	-	27,858	1,151	23,215	83%	-	4,643
Total Departmental Expend	\$ 1,329,429	\$ -	\$ 1,329,429	\$ 55,853	\$ 1,118,161	84%	\$ -	\$ 211,268
Employer Contributions	484,140	-	484,140	18,555	318,849	73%	-	115,141
Total General Fund Appropriations	\$ 1,763,619	\$ -	\$ 1,763,619	\$ 72,409	\$ 1,437,011	81%	\$ -	\$ 326,608

South Carolina Workers' Compensation Commission

2011 - 2012 Budget

April 30, 2012

Earmarked Funds

	Original Budget	Budget Amendments	Amended Budget	Year-To-Date : 83.33%				
				Expended April	Year to Date	%	Encumbr	Balance
Commissioners								
Salaries								
Teague Susstience	\$ 72,350	\$ -	\$ 72,350	\$ 5,587	\$ 51,717	71%	\$ -	\$ 20,633
Total Salaries	72,350	-	72,350	5,587	51,717	71%	-	20,633
Other Operating Expenditures								
Contractual Services								
Office Equipment Service	700	-	700	-	-	0%	-	700
Copying Equipment Service	200	-	200	-	-	0%	-	200
Print/Bind/Advertisement	510	-	510	-	508	100%	-	2
Print Pub Annual Reports	28	-	28	-	-	0%	-	28
Data Processing Services	30,000	-	30,000	2,398	25,335	85%	-	4,665
Freight Express Delivery	490	-	490	-	-	0%	-	490
Telephone	5,100	-	5,100	322	5,705	73%	-	1,394
Cellular Phone Service	8,100	-	8,100	2,050	6,210	77%	-	1,890
Legal Services/Attorney Fees	160,000	-	160,000	15,198	122,447	77%	-	37,803
Other Professional Services	972	-	972	-	1,561	161%	-	(589)
Total Contractual Services	206,100	-	206,100	19,968	159,978	78%	-	46,122
Supplies & Materials								
Office Supplies	4,000	-	4,000	704	5,596	340%	-	(1,596)
Copying Equipment	3,200	-	3,200	306	2,098	66%	-	1,102
Printing	1,700	-	1,200	-	1,170	123%	-	(270)
Data Processing Supplies	649	-	649	-	-	0%	-	649
Postage	8,000	-	8,000	636	6,685	84%	-	1,314
Communication Supplies	50	-	50	-	-	0%	-	50
Maint/Janitorial Supplies	200	-	200	15	119	60%	-	81
Motor Vehicle Supp/Gasoline	100	-	100	-	-	0%	-	100
Other Supplies	100	-	100	107	107	107%	-	(7)
Total Supplies & Materials	17,499	-	17,499	1,271	16,077	92%	-	1,422
Fixed Charges								
Rental-Cont Rent Payment	2,500	-	2,500	281	2,007	80%	-	493
Rent-Non State Owned Property	141,000	-	141,000	11,694	116,938	83%	-	24,062
Rent-Other	250	-	250	-	-	0%	-	250
Insurance-State	1,633	-	1,633	-	840	51%	-	793
Insurance-Non State	169	-	169	-	-	0%	-	169
Fees & Fines	50	-	50	-	-	0%	-	50
Equipment Maintenance	500	-	500	-	-	0%	-	500
Total Fixed Charges	146,102	-	146,102	11,974	119,785	82%	-	26,317
Travel (Includes Leased Car)								
In State - Meals (Non-Reportable)	350	-	350	7	103	29%	-	247
In State - Auto Mileage	10,000	-	10,000	749	8,679	89%	-	1,321
In State - Subsistence Allowance	30,000	-	30,000	1,722	21,140	70%	-	8,850
Out State - Meals	100	-	100	-	73	73%	-	27
Out State - Auto Mileage	1,000	-	1,000	-	692	69%	-	308
Leased Car	35,000	-	35,000	-	26,137	75%	-	8,863
Total Travel	80,450	-	80,450	2,578	57,021	71%	-	23,429
Total Other Operating Expenditures	450,151	-	450,151	35,686	352,833	78%	-	97,340
Total Commissioners	\$ 522,501	\$ -	\$ 522,501	\$ 41,273	\$ 404,528	77%	\$ -	\$ 117,973

South Carolina Workers' Compensation Commission

2011 - 2012 Budget

April 30, 2012

Earmarked Funds

	Year-To-Date : 83.23%							
	Original	Budget	Amended	Expended	Year	%	Encumb	Balance
	Budget	Amendments	Budget	April	To Date			
Administration								
Salaries								
Classified Positions	\$ 307,300	\$ 91,034	\$ 398,034	\$ 12,778	\$ 255,558	64%	\$ -	\$ 142,476
Temporary Employees	11,247	-	11,247	514	8,053	72%	-	3,193
Terminal Leave	1,000	-	1,000	-	-	0%	-	1,000
Total Salaries	319,547	91,034	410,281	13,092	263,608	64%	-	146,673
Other Operating Expenditures								
Contractual Services								
Office Equipment Service	5,200	6,000	11,200	-	5,312	47%	-	5,888
Copying Equipment Service	550	-	550	-	-	0%	-	550
Print/Dial/Advancement	500	-	500	-	282	56%	-	218
Print Pub/Annul Reports	22	-	22	-	-	0%	-	22
Data Processing Services	143,000	-	143,000	14,431	121,008	85%	-	21,992
Freight Express Delivery	1,000	-	1,000	60	617	62%	-	383
Telephone	6,200	-	6,200	390	3,491	56%	-	2,709
Cellular Phone Service	1,925	-	1,925	121	1,615	84%	-	310
Education & Training Services	1,000	-	1,000	-	949	95%	-	51
Attorney Fees	24,000	-	24,000	585	5,637	17%	-	18,363
General Repair	230	-	230	-	120	52%	-	110
Audit And Finance	103	-	100	-	101	102%	-	(3)
Catered Meals	-	-	-	-	154	0%	-	(154)
Other Professional Services	100	-	100	-	-	0%	-	100
Other Contractual Services	209	-	200	93	1,257	629%	-	(1,057)
Total Contractual Services	194,027	6,000	200,027	15,680	140,542	70%	-	59,485
Supplies & Materials								
Office Supplies	5,300	-	5,000	116	2,661	50%	-	2,339
Subscriptions	175	-	175	-	-	0%	-	175
Copying Equipment Supplies	3,934	-	3,934	211	1,684	43%	-	2,051
Printing	1,964	-	1,964	-	1,164	59%	-	800
Data Processing Supplies	500	-	500	-	500	100%	-	(50)
Postage	6,800	-	6,800	316	6,594	97%	-	206
Main/Janitorial Supplies	150	-	150	12	95	63%	-	55
Fees & Fines	280	-	280	-	50	18%	-	230
Gasoline/ Motor Vehicle Supply	300	-	300	-	-	0%	-	300
Employee Recognition Award	800	-	800	-	-	0%	-	800
Other Supplies	100	-	100	-	366	366%	-	(266)
Total Supplies & Materials	19,803	-	19,803	1,158	13,957	67%	-	6,846
Fixed Charges								
Rental-Cont. Rent Payment	5,000	5,000	10,000	743	5,265	53%	-	4,735
Rent-Non State Owned Property	83,986	-	83,986	7,567	25,666	31%	-	13,320
Rent-Other	3,500	-	3,500	580	2,551	73%	-	(851)
Insurance-State	7,483	-	7,400	-	665	9%	-	6,735
Insurance-Non State	134	-	134	-	-	0%	-	134
Dues and Memberships	3,985	5,000	8,985	-	4,650	52%	-	4,335
Sales Tax Paid	9,000	-	9,000	521	4,972	55%	-	4,028
Total Fixed Charges	118,095	10,000	128,095	9,410	99,119	77%	-	28,976
Travel (Includes Leased Car)								
In State - Meals Non/ Reportable	100	-	100	7	71	71%	-	29
Reportable Meals	100	-	100	-	-	0%	-	100
Out of State - M&A	50	-	90	-	-	0%	-	90
In State - Registration Fees	200	500	700	18	110	16%	-	582
Leased Car	12,000	5,000	17,000	-	9,654	57%	-	7,346
Total Travel	12,450	5,500	17,950	25	9,786	54%	-	8,202
Equipment								
Equipment Data Processing- PCs	-	-	-	-	-	0%	-	-
Total Equipment	-	-	-	-	-	0%	-	-
Total Other Operating Expenditures	344,415	21,500	365,915	26,803	267,805	73%	-	103,110
Total Administration	\$ 663,962	\$ 112,534	\$ 776,196	\$ 39,894	\$ 526,413	68%	\$ -	\$ 248,783

South Carolina Workers' Compensation Commission

2011 - 2012 Budget

April 30, 2012

Earmarked Funds

	Original Budget	Budget Amendments	Amended Budget	Year-To-Date : 63.33%				
				Expended	Year	%	Encumbr	Balance
				April	To-Date			
Claims								
Salaries								
Classified Positions	\$ 291,000	-	\$ 293,900	\$ 14,146	\$ 212,910	83%	\$ -	\$ 50,090
Temporary Positions	14,000	-	14,000	363	3,718	62%	-	5,282
Terminal Leave	1,000	-	1,000	-	-	0%	-	1,000
Total Salaries	306,000	-	308,900	17,509	251,628	82%	-	56,372
Other Operating Expenditures								
Contractual Services								
Office Equipment Services	200	-	200	-	-	0%	-	200
Print / Bind / Adv	250	-	250	-	282	38%	-	468
Print Pub Annual Reports	22	-	22	-	-	0%	-	22
Data Processing Services	21,932	-	21,932	2,337	21,659	99%	-	274
Freight Express Delivery	500	-	500	-	-	0%	-	500
Telephone	4,000	-	4,000	206	2,750	59%	-	1,250
Cellular Phone Service	2,500	-	2,500	54	500	20%	-	2,000
Temporary Services	26,000	-	26,000	1,078	18,558	73%	-	7,000
Other Professional Services	100	-	100	-	20	20%	-	70
Total Contractual Services	56,005	-	56,005	3,773	44,225	79%	-	11,790
Supplies & Materials								
Office Supplies	8,271	-	8,271	115	2,802	34%	-	5,469
Copying Equipment	3,000	-	3,000	244	1,661	55%	-	1,339
Printing	500	-	500	-	1,164	129%	-	(264)
Data Processing Supplies	75	-	75	-	1,370	1827%	-	(1,795)
Postage	14,000	-	14,000	1,909	16,372	117%	-	(2,372)
Maint./Janitorial Supplies	200	-	200	12	120	60%	-	80
Other Supplies	100	-	100	-	-	0%	-	100
Total Supplies & Materials	26,546	-	26,546	2,281	23,489	88%	-	3,057
Fixed Charges								
Rental-Cont Rent Payment	2,500	-	2,500	486	2,212	88%	-	288
Rent-Non State Owned Property	68,000	-	68,000	5,847	58,469	86%	-	9,531
Rent-Other	225	-	225	-	-	0%	-	225
Insurance-State	1,080	-	1,080	-	665	62%	-	415
Insurance-Non State	134	-	134	-	-	0%	-	134
Equipment-Copying	800	-	800	-	-	0%	-	800
Equipment Maintenance	1,000	-	1,000	-	-	0%	-	1,000
Total Fixed Charges	73,739	-	73,739	6,333	61,346	83%	-	12,393
Travel (Includes Leased Car)								
In State - Meals (Non-Reasonable)	300	-	300	-	-	0%	-	300
In State - Lodging	600	-	600	-	-	0%	-	600
In State - Auto Mileage	600	-	600	-	254	39%	-	346
In-State Registration	200	-	200	-	-	0%	-	200
Reasonable Meals	400	-	400	52	316	79%	-	84
Total Travel	2,100	-	2,100	52	590	28%	-	1,550
Total Other Operating Expenditures	158,390	-	156,390	12,440	129,599	82%	-	29,791
Total Claims	\$ 464,390	\$ -	\$ 465,300	\$ 29,949	\$ 381,228	82%	\$ -	\$ 85,163

South Carolina Workers' Compensation Commission

2011 - 2012 Budget

April 30, 2012

Earmarked Funds

	Original Budget	Budget Amendments	Amended Budget	Year To-Date : 83.33%				
				Expended April	Year to Date	%	Encumb	Balance
Insurance and Medical Services								
Salaries								
Classified Positions	418,000	14,956	432,956	17,160	390,810	76%	-	102,997
Temporary Employees	15,038	-	15,038	626	12,590	84%	-	2,028
Total Salaries	433,038	14,956	447,994	18,086	342,609	76%	-	105,385
Other Operating Expenditures								
Contractual Services								
Office Equipment Service	200	-	200	-	-	0%	-	200
Copying Equipment Service	300	-	300	-	-	0%	-	300
Print/Bind/Advertisement	500	500	1,000	-	312	31%	-	688
Print Pub Annual Report	24	-	24	-	-	0%	-	24
Data Processing Services	40,000	9,000	49,000	3,748	36,737	75%	-	12,263
Telephone	2,676	-	2,676	225	2,334	77%	-	592
Cell Phone	3,000	-	3,000	336	737	25%	-	2,263
Catered Meals	2,000	-	2,000	-	957	48%	-	1,043
Other Professional Services	1,800	-	1,800	-	470	26%	-	1,330
Other Contractual Services	2,600	-	2,600	-	1,771	67%	-	867
Total Contractual Services	53,060	9,500	62,560	4,364	42,981	69%	-	19,569
Supplies & Materials								
Office Supplies	3,000	-	3,000	149	3,724	124%	-	(724)
Copying Equipment	3,500	-	3,500	269	1,836	52%	-	1,664
Printing	1,500	-	1,500	-	1,565	104%	-	(65)
Data Processing Supplies	500	-	500	-	548	110%	-	(48)
Postage	7,000	5,000	12,000	931	7,654	64%	-	4,306
Maintenance/Journal Subsk	75	100	175	13	105	60%	-	70
Building Materials	-	1,880	1,880	-	2,001	106%	-	(121)
Fees & Fines	50	100	150	-	25	17%	-	125
Other Supplies	100	-	100	-	-	0%	-	100
Total Supplies & Materials	15,725	7,080	22,805	1,362	17,496	77%	-	5,309
Fixed Charges								
Rental-Crm: Rent Payment	2,104	5,000	7,104	475	2,796	39%	-	4,308
Rent-Non State Owned Property	48,000	2,000	50,000	4,127	41,272	83%	-	8,728
Rent-Other	225	2,000	2,225	-	848	38%	-	1,377
Insurance-State	1,101	1,000	2,101	-	735	35%	-	1,366
Insurance-Non State	148	-	148	-	-	0%	-	148
Equipment Maintenance	942	-	942	-	-	0%	-	942
Sales Tax Paid	3,030	(1,880)	1,120	31	576	52%	-	542
Total Fixed Charges	55,520	6,120	61,640	4,583	46,730	73%	-	17,410
Travel (Includes Leased Car)								
In State - Meals (Non-Reportable)	400	-	400	58	58	15%	-	342
In-State Registration	100	-	100	-	-	0%	-	100
Reportable Meals	350	-	350	-	246	70%	-	104
In State - Lodging	700	-	700	237	297	42%	-	403
Total Travel	1,350	-	1,350	355	601	45%	-	749
Total Other Operating Expenditures	125,645	24,700	150,345	10,805	107,308	71%	-	43,037
Total Insurance and Medical Services	\$ 558,683	\$ 39,656	\$ 598,339	\$ 28,691	\$ 449,917	75%	\$ -	\$ 148,407

South Carolina Workers' Compensation Commission

2011 - 2012 Budget

April 30, 2012

Earmarked Funds

	Original Budget	Budget Amendments	Amended Budget	Year-To-Date : 63.33%				
				Expended Apr.	Year In Date	%	Encumbr.	Balance
Judicial								
Salaries								
Classified Positions	\$ 151,750	\$ 26,985	\$ 178,735	\$ 13,472	\$ 294,469	78%	\$ -	\$ 84,266
Total Salaries	351,750	26,985	378,735	13,472	294,469	78%	-	84,266
Other Operating Expenditures								
Contractual Services								
Office Equipment Services	80	-	80	-	-	0%	-	80
Copy Equipment Services	850	-	850	-	103	16%	-	547
Print/Bind/Advertisement	800	-	800	-	253	32%	-	547
Print Pub Annual Reports	20	-	20	-	-	0%	-	20
Data Processing Services	23,000	8,000	31,000	1,355	19,955	64%	-	11,045
Telephone	2,000	-	2,000	215	1,824	94%	-	116
Cellular Phone Service	1,104	-	1,104	71	652	51%	-	417
Other Professional Services	200	-	200	-	-	0%	-	200
Total Contractual Services	28,054	8,000	36,054	1,641	23,087	64%	-	12,967
Supplies & Materials								
Office Supplies	2,000	-	2,000	104	4,376	219%	-	(2,376)
Copying Equipment Supplies	1,200	1,000	2,200	218	1,497	68%	-	703
Printing	1,000	-	1,000	-	1,111	111%	-	(111)
Data Processing Supplies	75	-	75	-	445	594%	-	(370)
Postage	9,000	-	9,000	657	6,292	70%	-	2,708
Maintenance/Janitorial Supplies	250	-	250	11	74	43%	-	76
Promotional Supplies	20	-	20	-	-	0%	-	20
Other Supplies	100	-	100	-	-	0%	-	100
Total Supplies & Materials	13,545	1,000	14,545	990	13,795	95%	-	750
Fixed Charges								
Rentl-Cens Rent Payment	1,750	500	2,250	415	1,807	80%	-	449
Rent Non State Owned Property	60,000	2,000	62,000	5,153	51,590	83%	-	10,410
Rent-Other	125	-	125	-	-	0%	-	125
Insurance-State	1,121	500	1,621	-	595	37%	-	1,026
Insurance-Non State	120	-	120	-	-	0%	-	120
Total Fixed Charges	63,316	3,000	66,316	5,575	53,987	82%	-	12,129
Travel (Includes Leased Car)								
In State - Meals / Non-Reportable	750	-	750	-	194	78%	-	56
Reportable Meals	750	500	1,250	150	606	81%	-	144
In State - Lodging	750	1,000	1,750	-	910	52%	-	840
In State - Auto Mileage	1,200	1,000	2,200	151	1,287	58%	-	913
In State - Misc Travel Expense	100	-	100	-	-	0%	-	100
In-State Registration	100	-	100	-	-	0%	-	100
Out State - Auto Mileage	500	-	500	-	-	0%	-	500
Total Travel	2,950	2,500	5,450	307	2,997	56%	-	2,453
Total Other Operating Expenditures	107,665	34,500	142,165	8,513	93,866	77%	-	28,299
Total Judicial	\$ 459,415	\$ 41,485	\$ 500,900	\$ 21,985	\$ 388,335	78%	\$ -	\$ 112,565
Earmarked Funds								
Department Totals								
Commissioners	\$ 522,501	\$ -	\$ 522,501	\$ 41,275	\$ 404,528	77%	\$ -	\$ 117,973
Administration	663,662	112,534	776,196	39,294	526,413	69%	-	249,783
Claims	466,390	-	466,390	24,948	381,218	82%	-	85,162
Insurance & Medical	558,603	39,656	598,259	28,691	445,917	75%	-	148,402
Judicial	459,415	41,485	500,900	21,985	368,355	78%	-	112,545
Total Departmental Expend	\$ 2,670,691	\$ 193,675	\$ 2,864,366	\$ 156,291	\$ 2,150,422	75%	\$ -	\$ 713,944
Employer Contributions	448,184	-	448,184	18,150	187,395	86%	-	60,789
Total Earmarked Funds	\$ 3,118,815	\$ 193,675	\$ 3,312,490	\$ 174,471	\$ 2,537,817	77%	\$ -	\$ 774,673
Capital / Computer Project Carryforward	\$ 9,831	\$ -	\$ 9,831	\$ -	\$ 2,475	25%	\$ -	\$ 7,356

MEMORANDUM

Date: May 16, 2012

TO: Mr. Gary Cannon
Executive Director

FROM: Cathy Floyd
Human Resources

SUBJECT: Human Resource Report Period of April 10 – May 15, 2012

Below is a summary of the Human Resource activity for the period of April 10 – May 15, 2012.

Recruitment and Selection

- Assisted with the human resources portion of the appointment of Commissioner Melody James
- Recruited for a Program Manager II position in the Information Services Department
 - 84 applicants, 5 applicants selected for the interview process
 - Extended an offer that was accepted by Betsy Hartman
 - Notified all applicants not selected the position had been filled
- The summer law clerk intern, Kristen Smalls, began on May 7 and will end her 6-week term on June 15, 2012

Employee Relations (ER)

- One ER issue was addressed during the activity period
- Three employee injuries were reported to CompFundium.
- Employee of the Year Selection Committee met on April 27, 2012 and selected the 2011 Employee of the Year recipient to be named at the Employee Appreciation Luncheon on Monday, May 21, 2012.
- The week of May 7 – 11, 2011 was Employee Appreciation Week
 - Daily activities were held during the week
 - Wednesday, May 9, 2011 was declared State Employee Appreciation Day by the Governor
- The Employee Appreciation Luncheon has been scheduled for Monday, May 21, 2012 in the First Floor Conference Room
- A Social Committee was formed to work on the Annual Holiday Event and the bi-monthly office activities to be held.

Benefits

- Assisted six employees with insurance coverage changes
- Issued three COBRA letters
- Assisted seven employees with retirement inquiries
- Assisted two employees with retirement/TERI participation
- Completed four inquiries with the Retirement Systems

State Human Resources Department (HRD)

- Contacted HRD regarding two different issues

SC Enterprise Information System (SCEIS)

- Two employment verifications
- Assisted two employees with payroll issues
- Assisted four employees with leave issues
- Forty-eight transactions were keyed into the system

Training

- Attended a SCEIS teleconference regarding MySCFemployee enhancements
- Attended the monthly SCEIS User Group Meeting

Ombudsman

- Assisted four claimants with inquiries by email and phone

Finance Related

- Assisted with the daily deposit
- For accountability purposes, approved all SCEIS financial transactions

ID	Key Projects	Sub Project	Regulation	Due Date	% of completion	% of time devoted to issue	Lead	Issues / Comments
	Phase I - Claims EDI release 3			July 2012	50%	80%	Edwin	working on issues 1231-1
	Phase II - Claims EDI release 3			July 2012	50%	70%	Ashley	reviewed document being working on process among
	Phase II - Claims EDI release 3			July 2012	50%	5%	Betsy	will be implemented soon
	Electronic Service Initiatives	Electronic Service Initiatives Clincher	07-210	hold until after EDI RLS 3	0%			
		Pharmacy Service Initiatives - Form 116e Putil 006 - Form 01	07-213	hold until after EDI RLS 3	0%			
		Electronic Service Initiatives - Receipt of electronic Readings	07-211	TBD	0%			
		Electronic receipt of entry form or document	07-205	TBD	0%			
		12 M Review of current Mayo Medical Reporting from Carfax	07-412	TBD	0%			
	SC Vets Release	Automator of the Show Cause fees for printing fees and alters automaticity rather than manually		TBD	60%	0%	Betsy	waiting on BrownPalm for details
	Lab fees			TBD	15%	0%	Betsy	Have requirements from Compliance and review. Will draft document to pass to new VCIO

WCGN Projects - State Reporting

Period	06/19/12	Status	May	Not Started	Timing
Lapse in coverage notification	notification of coverage for Home Builders Association renewal	7/1/12 - 2 on 8/30/12	80%	20%	In production with verification of policy information. Need to settle listing with Home Builders
Plus Application for eService	Apply to use eService / 7/12/12 for application DS T	1st quarter FY 13/13	10%	20%	Setting up meeting with Hybrid on web site changes.
			Projects Amanda	70%	
			Projects Duane	80%	
			Projects Roby	65%	

Priority	Maintenance Issue	Project	Start date	Estimated completion	% complete	% of items downloaded to issue	Assigned to	Status
	FOIA report requests, general issues and questions from Coverage, claims and Judicial	all departments	ongoing	ongoing	Maintenance: Ovario	30%	Ovario	
	FOIA report requests, general issues and questions from Coverage, claims and Judicial	all departments	ongoing	ongoing	Maintenance: Armando	30%	Armando	Current issues
	FOIA report requests, general issues and questions from Coverage, claims and Judicial	all departments	ongoing	ongoing		40%	Emily	
					Maintenance: Emily	40%		

W	Project	Sub Project	Due Date	% of completion	% of tasks divided to issue	Assigned to	Subject
	Business Continuity Planning & Contract Issues	BSIT	ongoing	100%	EDN	Below	Submit IT Road Map for transition to new COO. Evaluate options for business deal support, taking into account on phone and in hand

IT Projects and Maintenance January 17, 2012 to February 21, 2012



#CCIT Projects Status Report

State of South Carolina



Workers' Compensation Commission

To: Gary Cannon
SCWCC Executive Director

From: Grant Duffield
IMS Director

Date: 7 - May - 2012

Subj: Insurance and Medical Services Department
April 2012 Full Commission Report

Please find attached information provided to summarize the status and workflow of initiatives currently underway within the Insurance and Medical Services (IMS) Department

The statistical data concerning the IMS Department's April 2012 endeavors is organized as follows.

Page 1: Compliance Division Information.
Page 2: Coverage Division Information.
Page 3: Self Insurance and Medical Services.

In addition to the statistical data provided, please be advised of the following workflow initiatives:

Compliance Division	<ol style="list-style-type: none">1. Processing of Outstanding Carrier fines.2. GEAR program support and scheduling of CLAR Hearings.
Coverage Division	<ol style="list-style-type: none">1. SC Homebuilder's Association coverage verification web interface module in testing.2. Working to implement cross training / staff development opportunities within IMS dept3. Working with IT to refine EDI-R3 decision logic / matrix.4. 2,968 "hits" on Coverage Verification website
Medical Services	<ol style="list-style-type: none">1. Identifying updates / edits needed within the Medical Services Provider Manual.2. Released "web-based" MBR entity information update dbase/form.3. Working to Approve / Re-Approve Medical Bill review entities.4. Deployed template correspondence letters to support greater Bill Review/Dispute process efficiencies.5. Deployed "web-based" Medical Bill Dispute petition form to streamline MBD process. No responses in first 3 weeks of use.6. Implemented weekly Bill Dispute resolution meetings with Dr. Adcock.
IMS Administration:	<ol style="list-style-type: none">1. Monthly department wide meetings.2. Working with team members to review / improve team processes and key functions.3. Working on fiscal impacts analysis with Ms. Gantt.

Mr. Cannon, while this summary is in no way all-inclusive, it may serve to assist you and our Commissioners in understanding the key initiatives underway in the IMS Department and provide measures by which the Department's effectiveness can be gauged. IMS welcomes any guidance that you and/or our Commissioners can provide concerning our performance and direction.

Carryover Caseload:

The Compliance Division endeavors to maintain a month-on-month "carry over" caseload (backlog) of 300 cases. Compliance closed April 2012 with 478 cases active, compared to an active caseload of 960 at the close of April 2011.

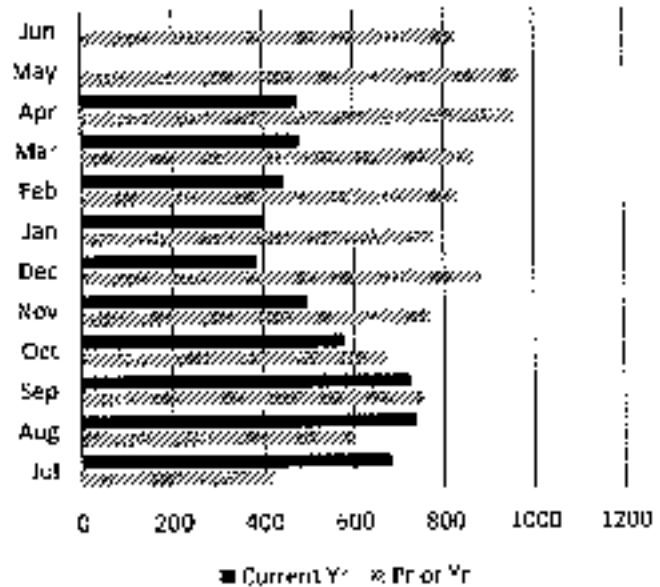
Cases Resolved:

Due to the decrease in carry-over, greater effort is focused on case resolution. For the month of April 2012, Compliance Division staff closed-out 87 cases, a slight decrease from 90 cases closed in March 2012.

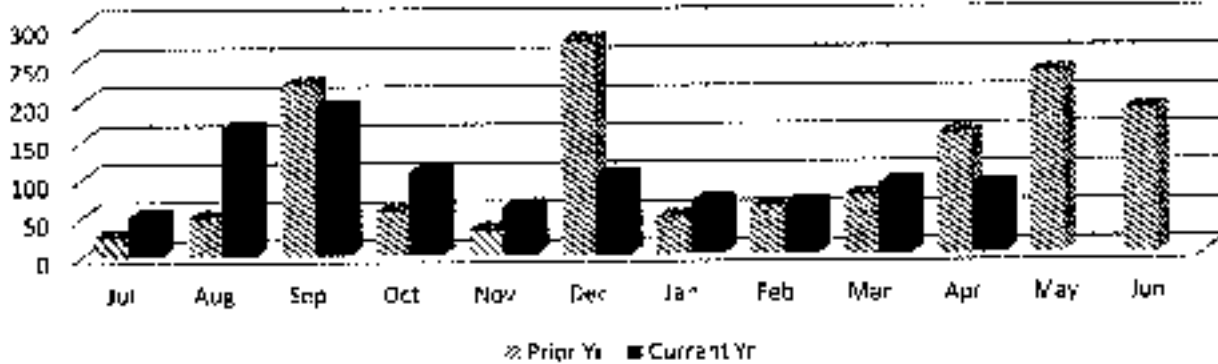
Compliance Fines:

Year to Date, the Compliance Division has collected \$281,604 in fines which represents 99% of prior year's accrual (\$283,183). Compliance fine revenue represents 19% of the Commission's annual earmarked revenue budget.

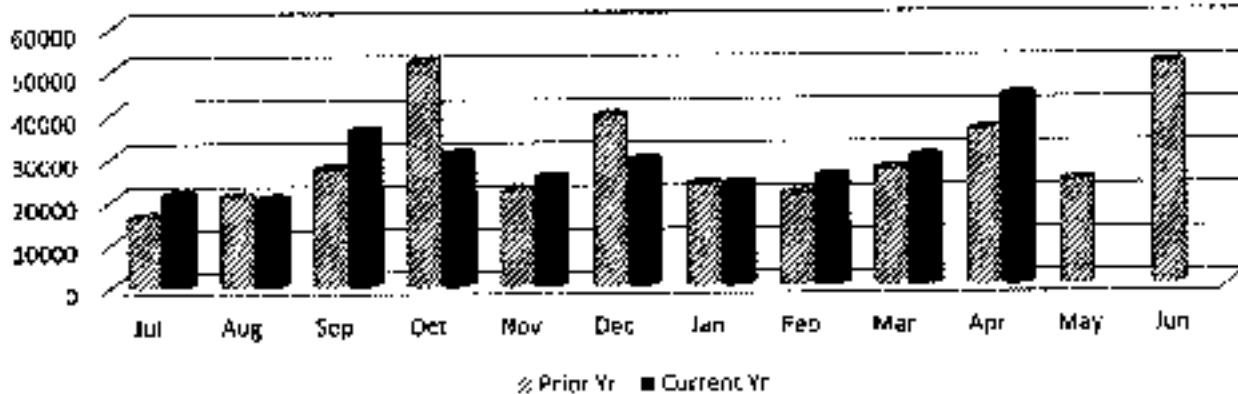
Caseload Pending v. Prior Year



Cases Resolved v. Prior Year



Compliance Fines Collected v. Prior Year



WCC Claim Files:

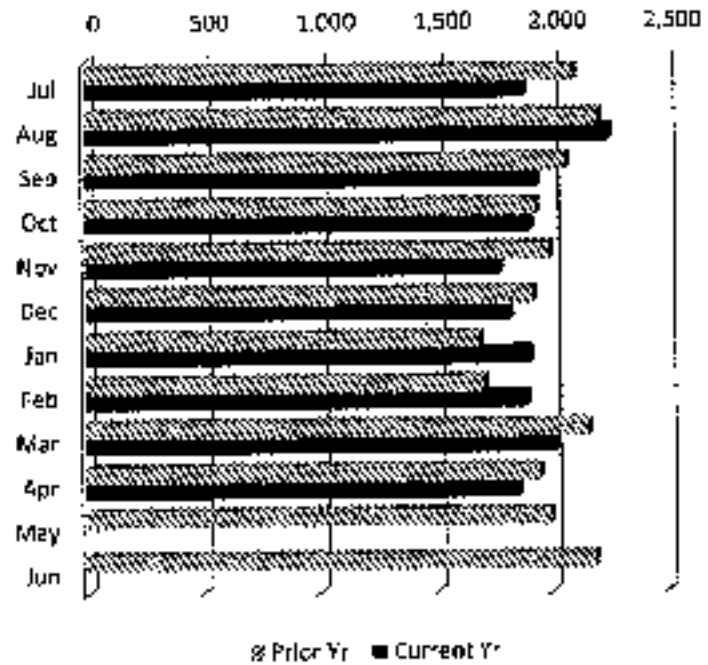
In April 2012, the Coverage Division created a total of 1,854 WCC Claim files. Of these, 1,524 were created electronically, and 330 were submitted in hard copy format. Year to Date, 19,239 Claim files have been created which is 98% of claim file volume for the same period in prior year (19,724)

Coverage Fines:

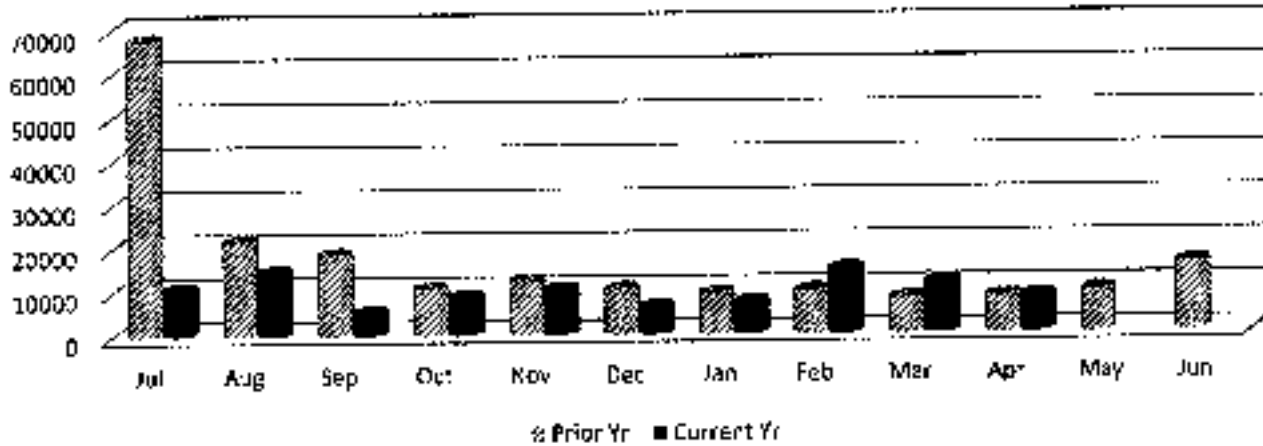
The Coverage Division collected \$8,400 in fine revenue in April 2012, a 3% increase from 8,200 in Coverage fines/penalties accrued during the same period in prior year (April 2011).

Coverage Division fines represent 10% of the Commission's annual earmarked budget.

Coverage Files Created vs Prior Year



Coverage Fines Collected v Prior Year



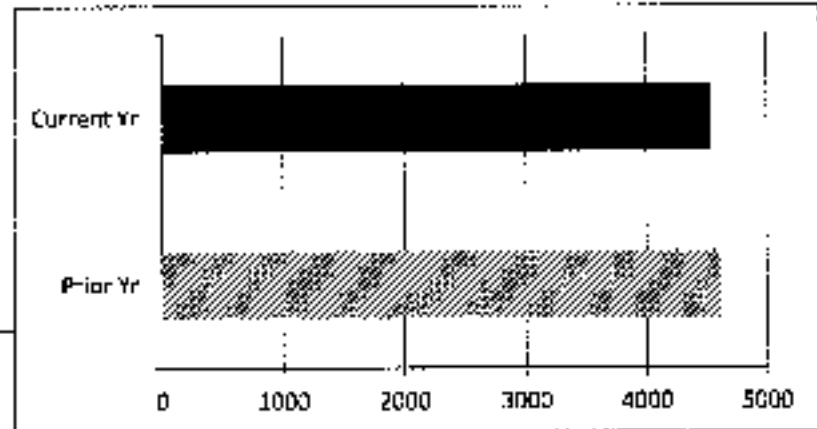
IMS SELF INSURANCE DIVISION

April 2012

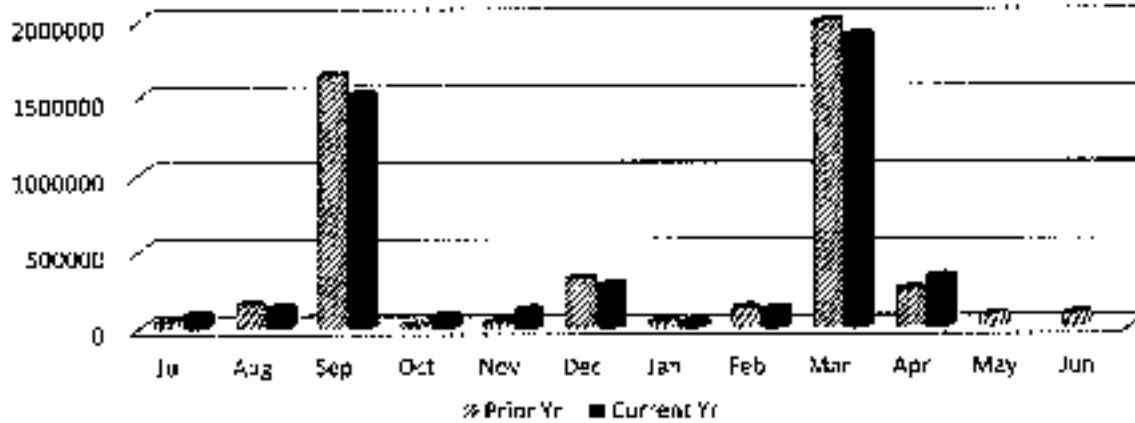
During the month of April 2012, the Self Insurance Division:

- * collected \$1,903,433 in self-insurance tax.
- * added 11 new self-insurers.
- * conducted 4 Self Insurance audits.

Year to Date, Self Insurance tax revenue is trending at 99% of prior year and 50 Self Insurance audits have been completed.



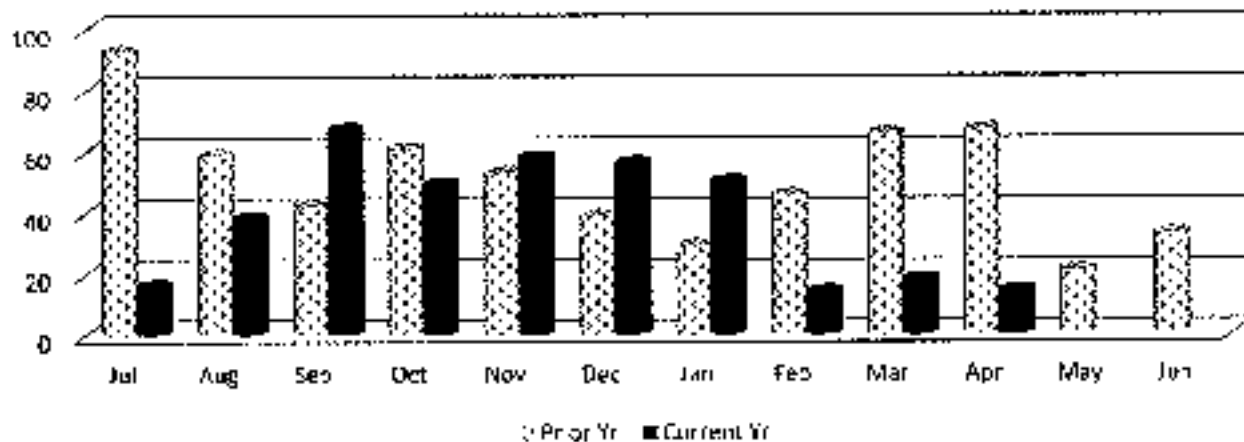
Self Insurance Tax Collections v. Prior Year



IMS MEDICAL SERVICES DIVISION

In April 2012, the Medical Services Division began the month with 18 bills pending review, received an additional 37 bills for review, conducted 55 bill reviews and ended the month with 14 bills pending.

Medical Bills Pending Review v. Prior Year



TO: GARY CANNON, EXECUTIVE DIRECTOR
FROM: GREGORY S. LINE, DIRECTOR OF CLAIMS
SUBJECT: CLAIMS REPORT FOR THE MONTH OF February
DATE: May 11, 2012

Fines assessed for the month of April 2012:

- We assessed **471** fines for the month of **April** which was up from assessing 469 fines for the month of **March**.
- The dollar amount of the fines assessed for the month **April** was **\$101,350** which was down from assessing **\$103,950** for the month of **March**.

Fines received for the month of April 2012:

- We received payment on **421** fines for the month of **April** which was down from receiving **492** fines for the month of **March**.
- The dollar amount of fines received for the month **April** was **\$100,200** which was down from receiving **\$116,915** for the month of **March**.

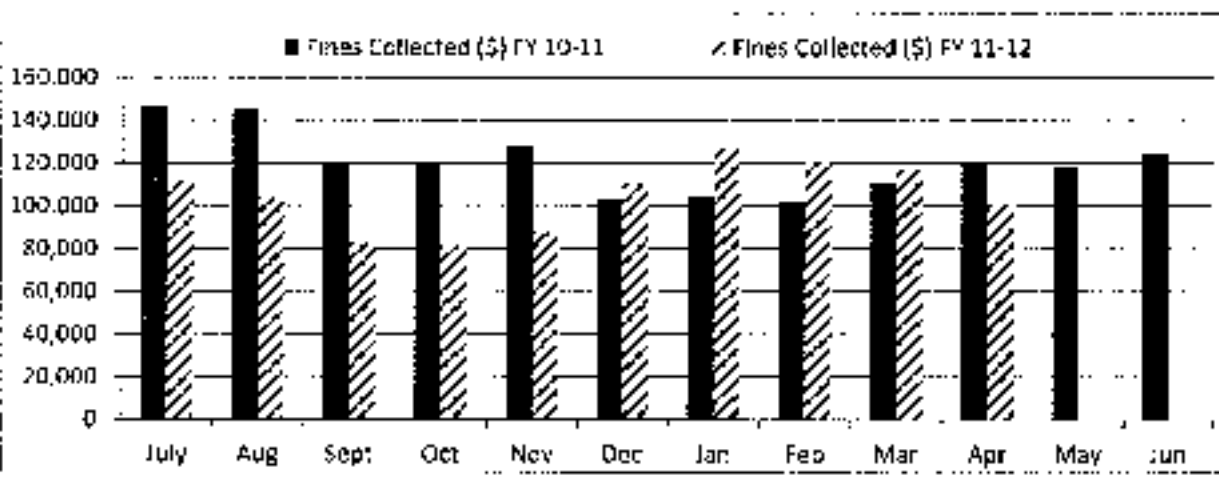
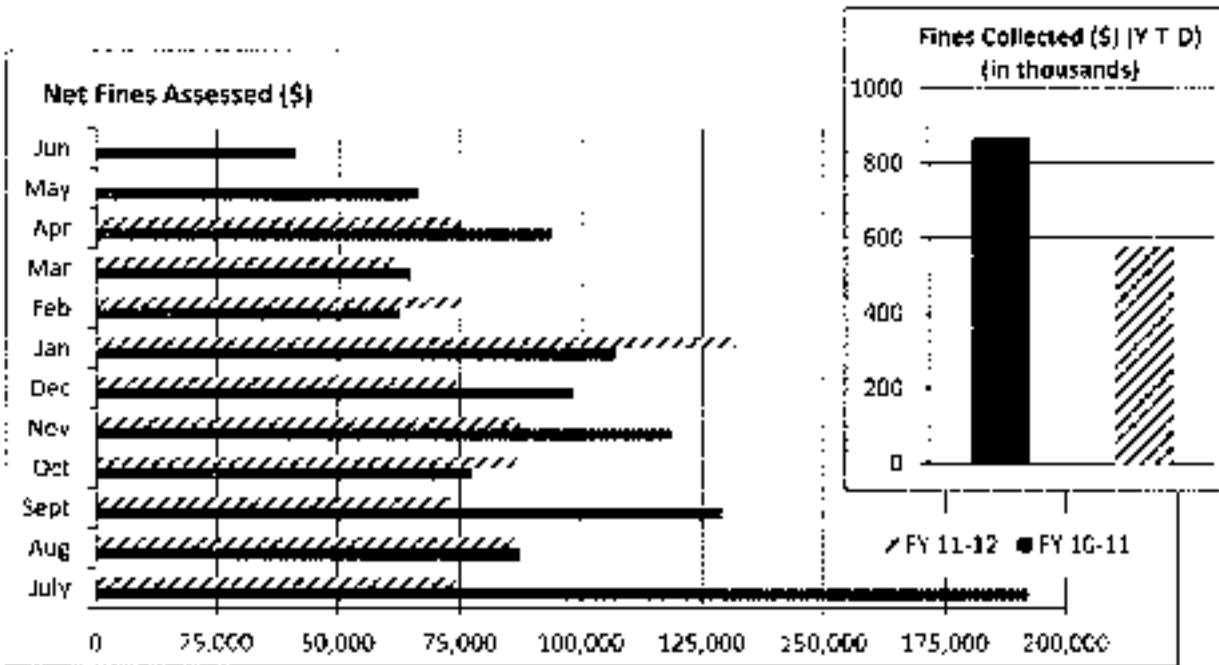
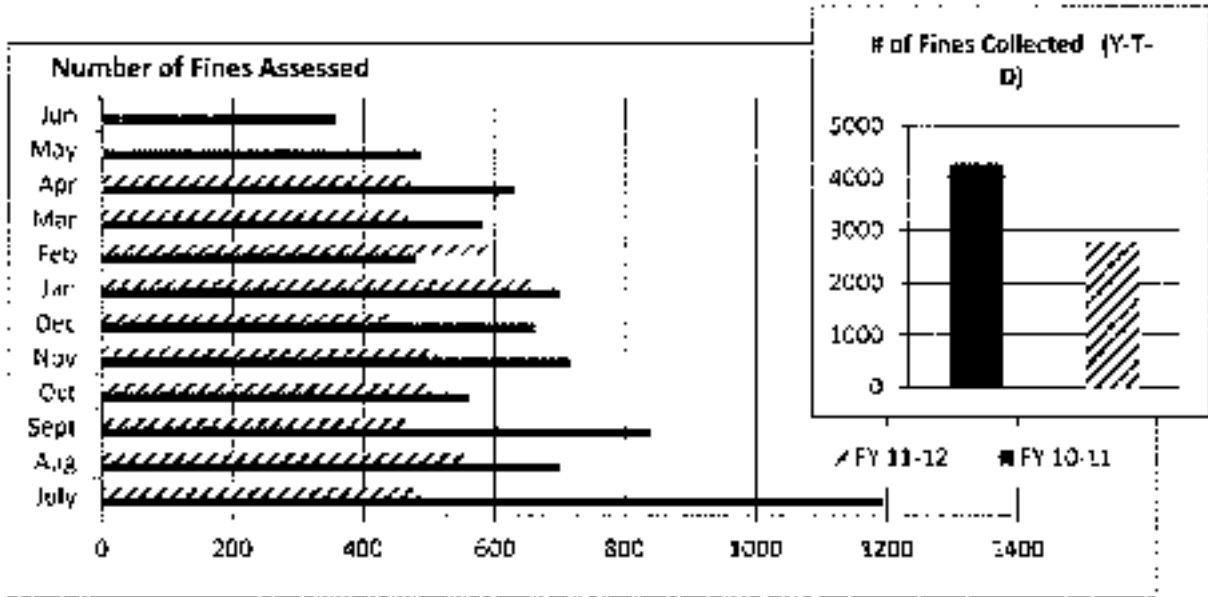
The number of fines assessed and collected since January 2011:

• January '11 fines assessed	701	January fines collected	510
• February fines assessed	479	February fines collected	512
• March fines assessed	579	March fines collected	552
• April fines assessed	631	April fines collected	620
• May fines assessed	487	May fines collected	577
• June fines assessed	358	June fines collected	609
• July fines assessed	487	July fines collected	543
• August fines assessed	553	August fines collected	516
• September fines assessed	469	September fines collected	406
• October fines assessed	504	October fines collected	396
• November fines assessed	514	November fines collected	419
• December fines assessed	444	December fines collected	511
• January fines assessed	656	January fines collected	608
• February fines assessed	590	February fines collected	593
• March fines assessed	469	March fines collected	492
• April fines assessed	471	April fines collected	421

The fines assessed for Form 18's went down 22 fines for the month of March. The last five months the Form 18 fines assessed have averaged 231 fines per month.

The Department is working hard to ensure all files are reviewed timely. The examiners are diligently processing all forms daily to ensure the files/computer is as up to date as possible.

I would anticipate that the Form 18 fines would remain between the 200 and 250 fines per month for the next several months.



Fines Assessed (#)			Fines Collected (#)			
	FY 10-11	FY 11-12		FY 10-11	FY 11-12	
July	1195	487	July	742	543	
Aug	699	553	Aug	722	516	
Sept	839	469	Sept	580	406	
Oct	560	504	Oct	599	396	
Nov	715	514	Nov	649	419	
Dec	661	444	Dec	488	511	
Jan	701	656	Jan	510	608	
Feb	479	590	Feb	512	593	
Mar	579	469	Mar	552	592	
Apr	631	471	Apr	620	421	
May	487	0	May	577	0	
Jun	358	0	Jun	609	0	
	7904	5157	65.2%	7160	5005	69.9%
YTD	5370	2971	55.3%	4290	2791	65.1%

Net Fines Assessed (\$)*			Fines Collected (\$)			
	FY 10-11	FY 11-12		FY 10-11	FY 11-12	
July	192,200	74,075	July	147,025	111,875	
Aug	87,550	86,375	Aug	144,825	103,800	
Sept	129,150	72,750	Sept	119,325	83,300	
Oct	77,450	86,600	Oct	120,300	81,300	
Nov	118,850	87,500	Nov	128,000	88,100	
Dec	98,300	74,250	Dec	103,000	110,700	
Jan	107,100	132,000	Jan	104,200	126,700	
Feb	62,900	75,375	Feb	101,700	120,225	
Mar	64,775	61,315	Mar	110,650	116,915	
Apr	94,000	74,750	Apr	119,525	100,200	
May	66,375	0	May	117,875	0	
Jun	41,225	0	Jun	124,650	0	
	1,139,875	824,790	72.4%	1,441,075	1,049,115	72.4%
	810,600	481,350	59.4%	866,675	579,075	66.8%

*after reductions and recinded

**CLAIMS DEPARTMENT REPORT
STATISTICS FOR FISCAL YEAR 2011-2012**
Prepared May 11, 2012

J. Claims Services Division

	July	August	Sept	Oct	Nov	Dec	Jan	Feb	March	April	May	June	Total
Forms 15 for T	2,327	2,541	2,183	2,268	2,077	2,065	2,295	2,478	2,343	2,429			23,026
Forms 16 for PI	195	350	318	292	246	302	286	367	260	274			2,868
Forms 18	5,595	5,867	5,373	5,165	4,696	5,335	5,448	5,535	5,680	5,015			53,709
Forms 20	978	1,042	1,067	965	992	935	975	1,028	966	1,014			978
Form 50 Claims	188	246	273	264	253	168	316	235	302	235			188
Form 61	673	829	561	884	625	711	912	654	781	801			7,431
Letters of Rep	165	195	177	167	211	293	175	150	174	151			1,859
Clinchers	701	775	629	620	662	736	857	673	782	741			7,376
Third Party Set	17	23	32	19	38	21	27	23	19	28			247
SSA Requests	119	152	147	109	101	79	145	118	125	125			1,220
Cases Closed	2,038	2,935	2,090	2,101	2,321	1,962	2,668	2,334	2,318	2,351			23,138
Cases Reviewed	1,057	1,626	1,043	1,050	1,334	787	1,420	1,777	1,560	1,400			13,154

CLAIMS DEPARTMENT REPORT

STATISTICS FOR FISCAL YEAR 2011-2012

Prepared May 11, 2012

II. Fines Assessed by Claims Department

	July	August	Sept	Oct	Nov	Dec	Jan	Feb	March	April	May	June	Total
Number Asses.	487	553	469	504	514	444	656	590	469	471			5,157
Number Rescir	116	136	92	85	104	96	171	208	157	107			1,272
Number Reduc	25	19	18	16	29	20	40	45	88	27			325
Number Paid	543	516	406	396	434	511	608	593	592	421			543
Number Outsta	1,871	1,772	1,743	1,766	1,742	1,579	1,455	1,245	965	908			908

Total Amt. Ass.	\$103,850	\$120,450	\$96,900	\$105,400	\$113,450	\$96,100	\$172,600	\$130,050	\$103,950	\$101,350			\$1,144,100
Total Amt. Rec.	\$25,950	\$29,550	\$21,500	\$17,000	\$21,700	\$19,950	\$36,100	\$44,150	\$29,850	\$22,450			\$268,200

Total Amt. Red	\$3,825	\$4,525	\$2,650	\$1,800	\$4,250	\$2,100	\$4,500	\$10,525	\$12,785	\$4,150			\$51,110
Total Amt. Paid	\$111,875	\$103,800	\$83,300	\$81,300	\$88,100	\$110,700	\$126,700	\$120,225	\$116,915	\$100,200			\$1,043,115
Total Outstand	\$372,223	\$354,798	\$344,248	\$349,548	\$348,948	\$312,298	\$317,598	\$272,748	\$217,148	\$191,698			\$191,698

Fines Collected Years 2007, 2008, 2009, 2010, 2011, 2012

	Jan	Feb	March	April	May	June	July	August	Sept	Oct	Nov	Dec
2007	21,620	34,891	36,520	35,339	45,785	36,760	46,555	68,018	49,261	56,934	45,203	40,261
2008	48,613	58,805	45,167	34,710	40,525	79,055	67,769	51,195	65,230	59,817	37,309	39,563
2009	37,080	44,750	35,980	49,862	93,182	65,351	100,393	119,953	100,026	66,565	61,627	54,390
2010	66,200	103,600	203,410	159,375	218,160	86,590	147,025	144,625	119,325	120,300	128,000	103,000
2011	104,200	101,700	110,650	139,525	117,875	124,850	111,875	103,800	63,300	61,300	85,100	110,700
2012	126,700	120,225	116,915	100,200								
*May collected figures include payments 5/1/2010 through 6/11/2010												
June collected figure includes payments 6/12/2010 through 6/30/2010*												

Fine Report for Nov, Dec 2011 & Jan, Feb, Mar & Apr 2012

	Nov	Dec	Jan	Feb	Mar	Apr
Amt assess	\$113,450	\$96,300	\$172,600	\$150,050	\$103,950	\$101,350
# fines as	514	458	656	590	469	471
Amt coll	\$85,100	\$110,700	\$126,700	\$120,225	\$116,915	\$100,200
<u>Fines coll</u>	<u>434</u>	<u>511</u>	<u>608</u>	<u>593</u>	<u>492</u>	<u>442</u>
Form 18's						
Fines assess						
Daily	\$42,400	\$42,400	\$52,800	\$49,600	\$47,200	\$44,400
Fines assessed						
file review	\$13,200	\$ 4,200	\$48,400	\$15,400	\$10,200	\$7,200
<u>Total amount</u>	<u>Assessed</u>	<u>\$55,600</u>	<u>\$46,600</u>	<u>\$101,200</u>	<u>\$65,000</u>	<u>\$57,400</u>
Fines assess daily	190	197	254	246	203	187
# fines assess						
file review	36	19	58	21	42	37
<u>Total fines assess</u>	<u>226</u>	<u>216</u>	<u>302</u>	<u>267</u>	<u>245</u>	<u>224</u>
Amt coll	\$49,300	\$69,300	\$82,200	\$62,925	\$70,200	\$61,000
# coll	230	299	372	289	347	238
All other fines assessed						
(Form 12-A, Form 15, Form 17, Form 19, denial letter, Form 20, failure to respond)						
Amt assess	\$57,850	\$39,900	\$71,400	\$65,050	\$46,550	\$49,750
# fines assess	288	242	354	323	224	247
Amt paid	\$35,800	\$41,400	\$44,500	\$57,300	\$46,715	\$39,200
# fines pd	189	212	236	304	245	218

The dollar amount of fines assessed for each form, for the month of February, and fines collected for each form from April 1, 2012 through April 30, 2012
 The number of fines assessed and collected, for each form, are in parenthesis.

	<u>Assessed</u>	<u>Collected</u>
Form 12A -	\$ 21,900.00 (110)	\$ 11,700.00 (61)
Form 15 Section I -	\$ 8,800.00 (41)	\$ 11,600.00 (46)
Form 15 Section II -	\$ 3,400.00 (17)	\$ 4,000.00 (20)
Form 15 S -	\$ 1,000.00 (5)	\$ 1,800.00 (9)
Form 17 -	\$ 0	\$ 1,500.00 (9)
Form 18 -	\$ 51,600.00 (224)	\$ 61,000.00 (238)
Form 19 -	\$ 50.00 (1)	\$ 850.00 (15)
Denial letter -	\$ 4,600.00 (23)	\$ 3,550.00 (21)
Failure to respond -	\$ 10,000.00 (50)	\$ 4,000.00 (21)
Form 16	\$ 0	\$ 100.00 (1)
Form 20	\$ 0	\$ 100.00 (1)
TOTAL -	\$ 101,350.00 (471)	\$ 100,200.00 (442)

TO: Gary M. Cannon, Executive Director
FROM: Gregory S. Line
Director of Claims
DATE: May 11, 2012
RE: Claims
Outstanding line status

Below is a list of three carriers that were sent a Second and Final Notice of fines Assessment on January 3, 2012.

1. Zurich North America (00090)
 - a. Beginning bal \$ 11,636.33
 - b. Bal as of 5/11/12 \$ **3,136.33**

2. Liberty Mutual Ins. Co. (00055)
 - a. Beginning bal \$ 2,600.00
 - b. Bal as of 5/11/12 \$ **1,200.00**

4. American Casualty Co. of Rdg. PA (00017)
 - a. Beginning bal \$ 1,186.33
 - b. Bal as of 5/11/12 \$ **900.00**

TO: Gary M. Cannon, Executive Director
FROM: Gregory S. Line
DATE: May 11, 2012
RE: Claims
Outstanding Fines Status

Below is the status of 3 companies that were sent a Second and Final Notice of fines Assessment on August 8, 2011.

1. YRC, Inc. (00767)
 - a. Beginning bal \$ 1,800.00
 - b. Bal as of 5/11/12 \$ 200.00

2. Accident Fund Ins. Co. of America (01072)
 - a. Beginning bal \$ 5,875.00
 - b. Bal as of 5/11/12 \$ 900.00

3. Preimer Group Ins. Co. (01100)
 - a. Beginning bal \$ 4,200.00
 - b. Bal as of 5/11/11 \$ 200.00

TO: Gary M. Cannon, Executive Director

FROM: Gregory S. Line
Director of Claims

DATE: May 11, 2012

RE: Claims
Outstanding fine status

Below is a list of four carriers that were sent a Second and Final Notice of fines Assessment on February 28, 2011.

1. American Casualty Co. of Rdg PA (00017)
 - a. Beginning bal \$ 7,086.33
 - b. Bal as of 5/11/12 \$ **200.00**

2. Lowe's Companies, Inc. (00946)
 - a. Beginning bal \$ 4,386.33
 - b. Bal as of 5/11/12 \$ **586.33**

3. SC School Board Self Ins. Trust Fund (00926)
 - a. Beginning bal \$ 9,600.00
 - b. Bal as of 5/11/12 \$ **600.00**

4. Federal Express Corp. (00956)
 - a. Beginning bal \$ 1,400.00
 - b. Bal as of 5/11/12 \$ **400.00**

TO: Gary M. Cannon, Executive

FROM: Gregory S. Linc
Director of Claims

DATE: May 11, 2012

RE: Claims
Outstanding Fines Status

Below is a list of two carriers that were sent a Second and Final Notice of fines Assessment on February 18, 2011

1. Safety National Casualty Corp. (01026)
 - a. Beginning bal \$ 1,800.00
 - b. Bal as of 05/11/12 \$ 400.00

2. Nash Johnson & Sons Farm, Inc. (00994)
 - a. Beginning bal \$ 4,800.00
 - b. Bal as of 05/11/12 \$ 200.00

SCWCC Judicial Report

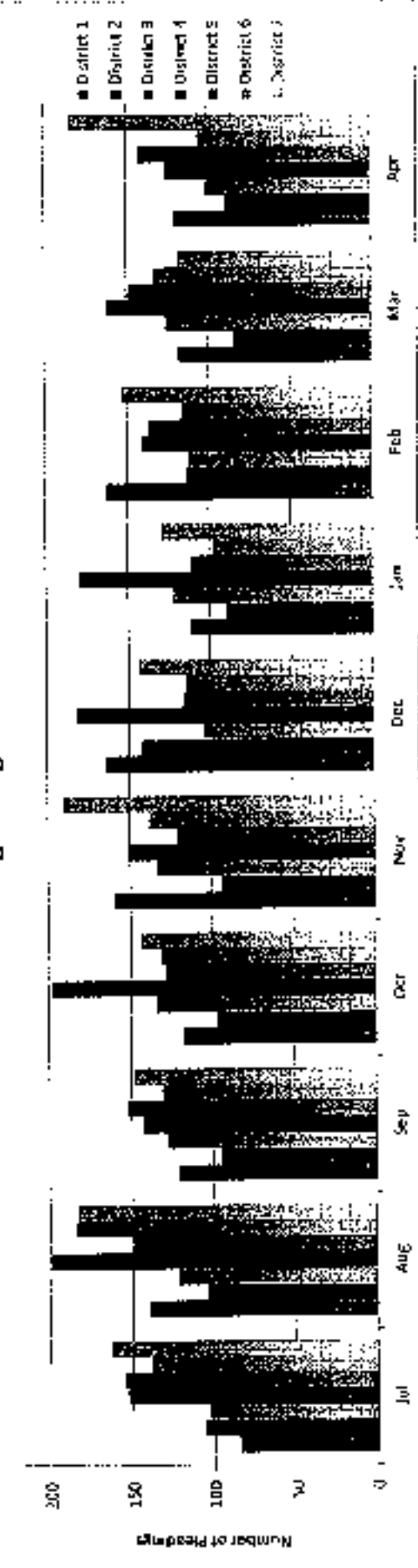


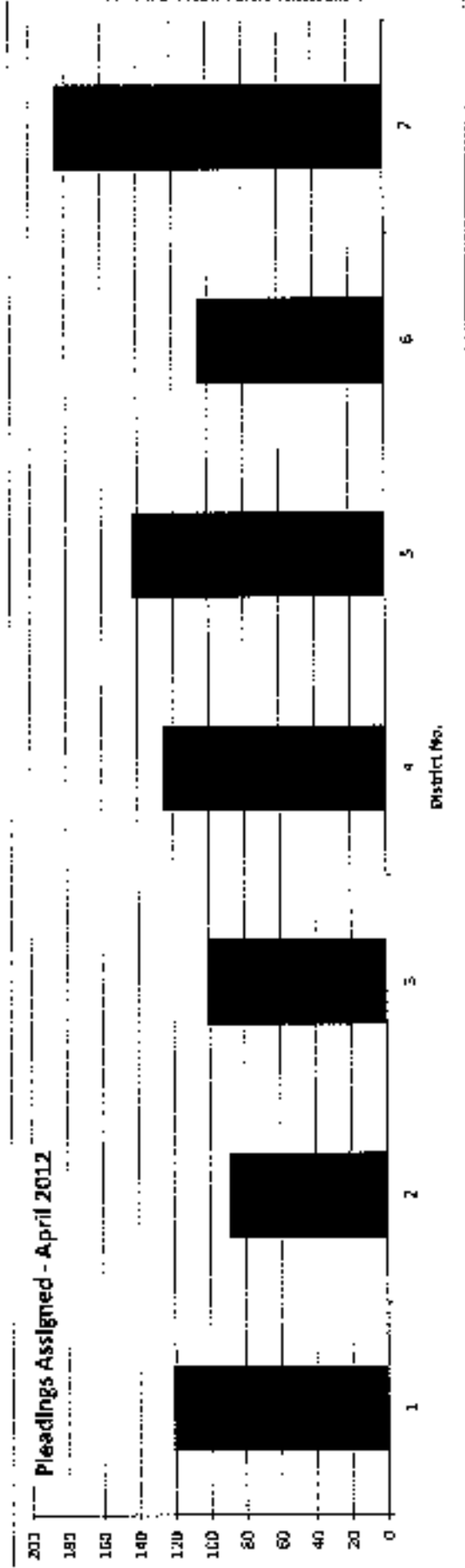
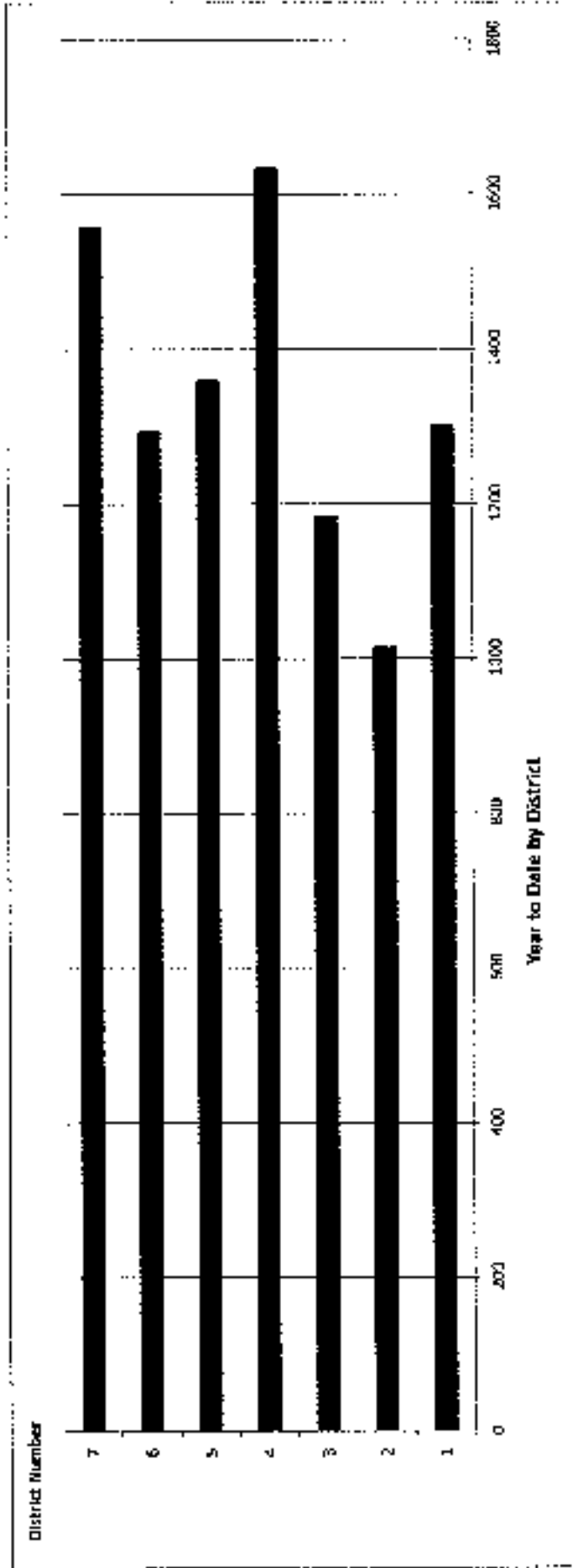
May 2012

Pleadings Assigned

	Greenville District 1		Anderson District 2		Orangeburg District 3		Charleston District 4		Florence District 5		Spartanburg District 6			Richland District 7			
	11-12	09-10	11-12	10-11	09-10	11-12	10-11	09-10	11-12	10-11	09-10	11-12	10-11	09-10	11-12	10-11	09-10
Jul	85	113	106	111	102	103	113	103	106	155	146	130	144	140	163	149	140
Aug	140	91	104	106	108	123	113	109	169	145	138	134	109	99	148	132	83
Sep	121	103	95	85	73	128	105	101	130	152	115	141	103	162	148	163	149
Oct	118	125	97	76	86	134	84	126	157	126	117	132	83	129	141	130	118
Nov	159	112	92	50	91	133	122	108	157	121	98	138	98	138	101	151	188
Dec	164	113	143	81	135	104	111	109	141	117	88	155	83	127	164	118	159
Jan	112	145	90	89	94	122	123	125	160	111	90	98	101	119	129	140	166
Feb	163	132	114	67	131	112	102	127	141	136	89	117	85	119	153	95	163
Mar	118	116	84	100	87	125	109	118	160	149	140	134	153	98	119	139	132
Apr	121	108	89	83	81	101	112	89	168	113	106	106	106	72	165	163	144
May	92	104	90	90	89	113	114	124	160	112	88	86	95	95	149	149	139
Jun	95	119	79	79	101	112	117	148	110	127	111	144	152	157	152	157	157
Totals	1301	1318	1015	1011	1105	1185	1324	1327	1844	1840	1894	1894	1812	1442	1558	1692	1798

Pleadings Assigned 2011-12

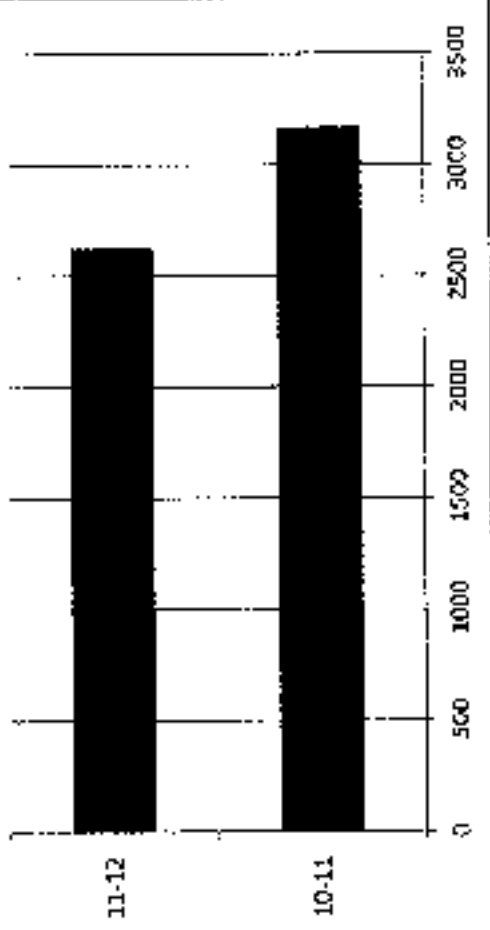




Informal Conf. Conducted

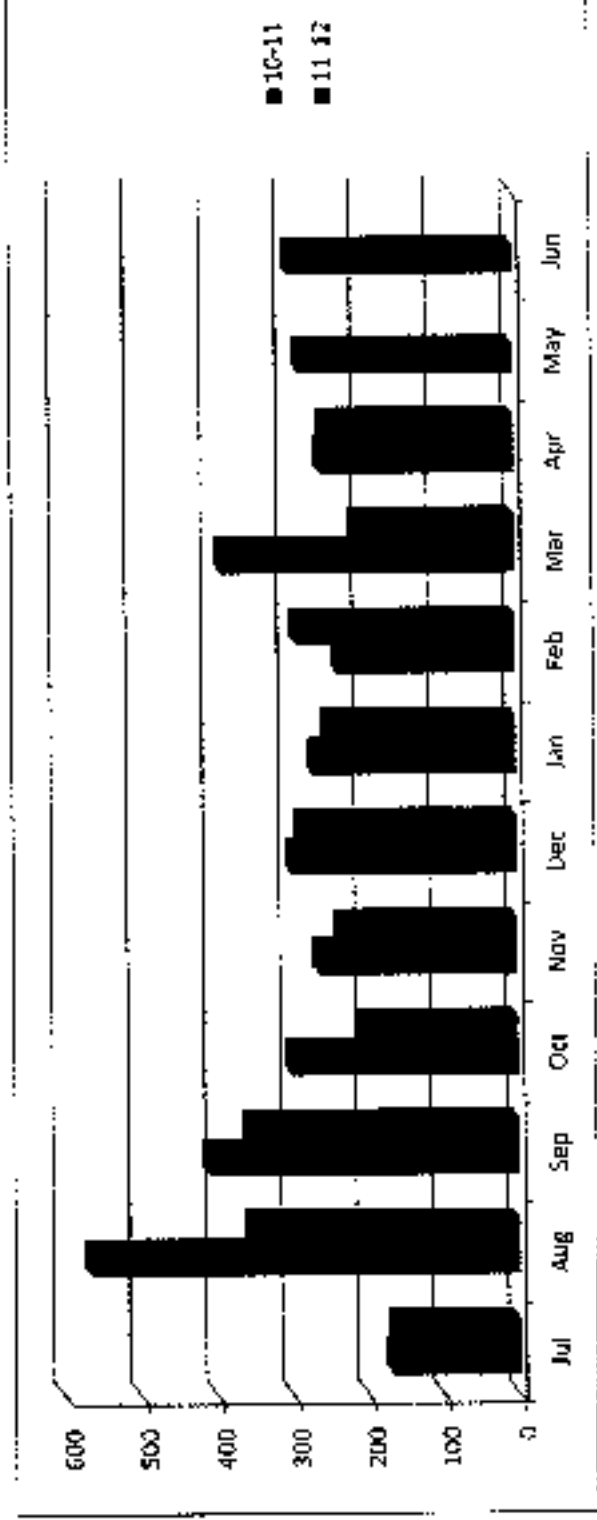
	10-11	11-12	
Jul	170	167	98.2%
Aug	567	356	62.8%
Sep	411	359	87.3%
Oct	402	208	68.9%
Nov	264	238	90.2%
Dec	299	287	96.0%
Jan	271	251	92.6%
Feb	237	292	123.2%
Mar	390	213	54.6%
Apr	260	255	98.1%
May	286		
Jun	301		
Total	3758	2626	

IC's to Date v. Prior



10-11	11-12	
3171	2626	82.8%

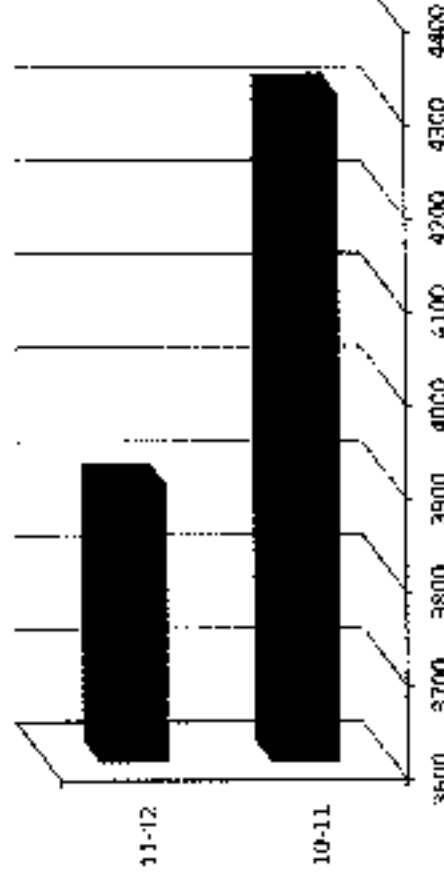
Y-T-D



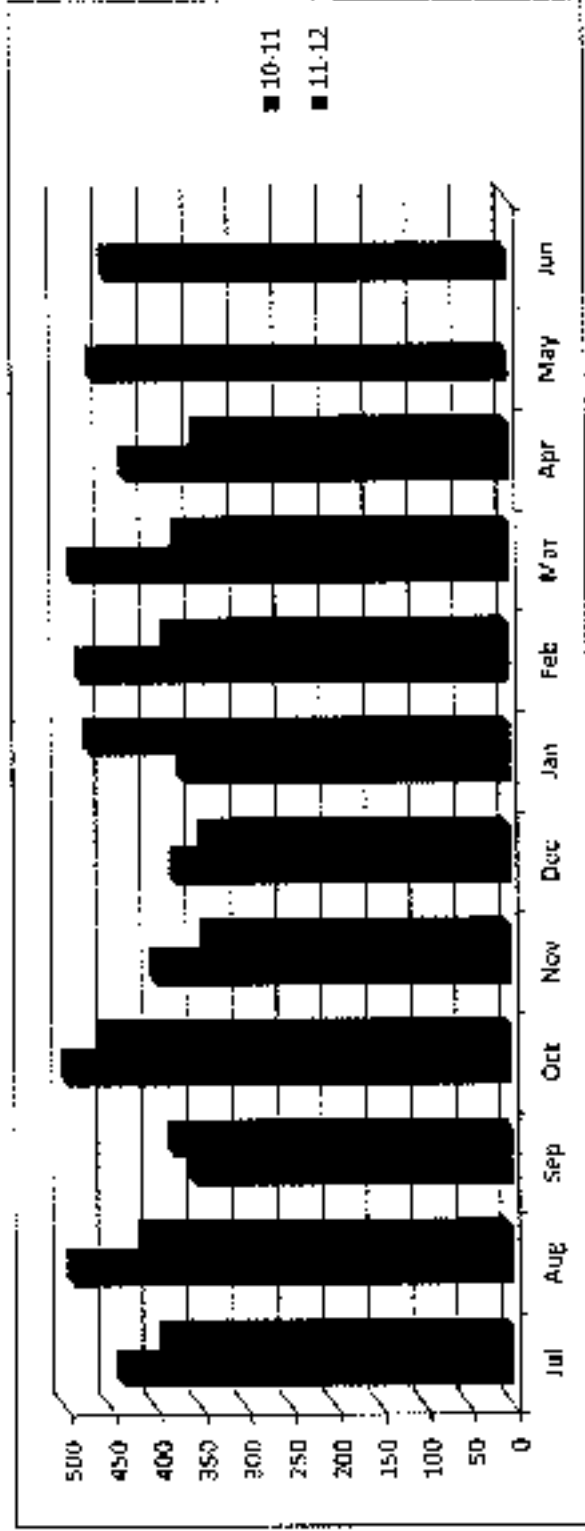
Informal Conf. Requested

	10 11	11-12
Jul	436	389
Aug	491	413
Sep	354	378
Oct	497	456
Nov	397	342
Dec	375	343
Jan	366	470
Feb	480	383
Mar	488	372
Apr	428	350
May	465	
Jun	450	
Total	5227	3896

Y-T-D



Y-T-D	10 11	11-12
	4312	3896
	0.903525	



Informal Conference & Mediations

Staff	Mileage/Hours	Month											
		Jul-11	Aug-11	Sep-11	Oct-11	Nov-11	Dec-11	Jan-12	Feb-12	Mar-12	Apr-12	May-12	Jun-12
Staff 1 Greg	SVM	22.00	410.00	0.00	218.00	769.00	375.00	1200.00	465.00	795.00	0.00	0.00	4457.00
	PVM	0.00	0.00	0.00	0.00	0.00	0.00	0.00	0.00	0.00	0.00	0.00	607.00
	Time	12.00	23.00	44.00	12.00	50.00	42.00	64.00	34.00	46.00	48.00	0.00	381.00
	Hotel	0.00	0.00	0.00	0.00	0.00	0.00	0.00	0.00	0.00	0.00	0.00	0.00
Staff 2 Ginger	SVM	426.00	187.00	0.00	620.00	455.00	0.00	0.00	0.00	0.00	0.00	0.00	1688.00
	PVM	0.00	47.00	28.00	34.00	390.00	0.00	0.00	0.00	0.00	0.00	0.00	425.00
	Time	32.00	26.00	48.00	44.50	51.00	0.00	0.00	0.00	0.00	0.00	0.00	207.50
	Hotel	0.00	0.00	0.00	0.00	0.00	0.00	0.00	0.00	0.00	0.00	0.00	0.00
Mediations	SVM	0.00	0.00	0.00	0.00	0.00	0.00	0.00	0.00	0.00	192.00	0.00	192.00
	PVM	0.00	0.00	301.00	0.00	0.00	0.00	0.00	245.00	0.00	0.00	0.00	546.00
	Time	0.00	0.00	133.00	0.00	12.00	0.00	10.00	42.00	7.00	46.00	0.00	250.00
	Hotel	0.00	0.00	0.00	0.00	0.00	0.00	0.00	311.00	0.00	170.20	0.00	481.20
Staff 3 Vivian	SVM	302.00	0.00	0.00	0.00	0.00	0.00	0.00	0.00	0.00	0.00	0.00	302.00
	PVM	0.00	0.00	0.00	0.00	0.00	0.00	0.00	0.00	0.00	0.00	0.00	0.00
	Time	28.00	8.00	8.00	0.00	0.00	0.00	0.00	0.00	0.00	0.00	0.00	44.00
	Hotel	0.00	0.00	0.00	0.00	0.00	0.00	0.00	0.00	0.00	0.00	0.00	0.00
Staff 4 Gary	SVM	713.00	509.00	745.00	273.00	552.00	230.00	512.00	539.00	0.00	594.00	0.00	4642.00
	PVM	0.00	0.00	0.00	0.00	0.00	0.00	0.00	0.00	0.00	0.00	0.00	0.00
	Time	38.50	32.50	41.00	27.50	31.50	32.50	55.50	32.00	16.00	43.25	0.00	350.25
	Hotel	0.00	0.00	0.00	0.00	0.00	0.00	0.00	0.00	0.00	0.00	0.00	0.00
Staff 5 Kelly	SVM	0.00	0.00	0.00	0.00	0.00	0.00	0.00	0.00	0.00	0.00	0.00	0.00
	PVM	0.00	0.00	0.00	0.00	0.00	0.00	0.00	0.00	0.00	0.00	0.00	0.00
	Time	0.00	13.00	24.50	12.50	12.50	12.50	12.50	12.50	12.50	24.50	0.00	137.00
	Hotel	0.00	0.00	0.00	0.00	0.00	0.00	0.00	0.00	0.00	0.00	0.00	0.00
Staff 6 Robin	SVM	0.00	0.00	0.00	0.00	0.00	0.00	0.00	0.00	0.00	0.00	0.00	480.00
	PVM	0.00	0.00	0.00	0.00	0.00	0.00	0.00	0.00	0.00	0.00	0.00	783.00
	Time	43.50	16.50	86.00	23.00	27.50	9.00	11.00	23.00	42.50	44.00	0.00	328.00
	Hotel	0.00	0.00	0.00	0.00	0.00	0.00	0.00	0.00	0.00	0.00	0.00	0.00

Totals FY 2011-2012	
SVM - State Vehicle Miles	31801.00
PVM = Personal Vehicle Miles	2427.00
T - Time	1691.75
H = Hotel Cost	481.20

Pleadings Assigned

Month	District 1	District 2	District 3	District 4	District 5	District 6	District 7
Jul-10	93	111	118	169	146	114	140
Aug-10	121	106	113	143	138	109	132
Sep-10	111	85	105	130	115	103	163
Oct-10	99	76	84	157	117	83	130
Nov-10	97	50	122	140	97	98	151
Dec-10	95	81	111	131	86	63	118
Jan-11	108	83	123	164	90	101	140
Feb-11	132	67	102	139	89	85	95
Mar-11	165	100	109	160	140	133	159
Apr-11	130	83	112	163	96	106	163
May-11	92	90	113	160	112	86	149
Jun-11	95	79	112	138	110	111	152
Totals	1338	1011	1324	1844	1340	1212	1692
FY 2010-2011							

State of South Carolina

.133 Main Street, 5th Floor
P.O. Box 1715
Columbia, S.C. 29202-1715



TEL: (803) 737-5700
FAX: (803) 737-5764

Workers' Compensation Commission

Executive Director's Report Gary M. Cannon May 21, 2012

Employee Meetings/Staff Training

Three employees participated in the employee focus group with the Executive Director on April 25. The Leadership Team met on April 24 and the Executive Staff met on May 8.

Constituent /Public Information Services

For the period April 12, 2012 through May 14, 2012 the Executive Director's Office had 285 contacts with various system constituents and stakeholders. The contacts included telephone communications; electronic and personal contacts with claimants or constituents, state agencies, federal agencies, attorneys, service providers, business partners; and letters with congressional offices.

Claims Administration Workshop for Workers' Compensation Claims Adjusters

The Claims Administration Workshop for Workers' Compensation Claims Adjusters was conducted on May 3, 2012 at the Baxter Hood Center in Rock Hill. A total of 81 registered. There were five cancellations and eight no-shows. A total of 68 participated at the workshop plus 6 staff members.

SCWCC Stakeholder Electronic Distribution List

On April 6, 2012 notice was posted on the website for interested persons to sign-up to receive updates and be informed of activities at the Commission. As of May 14, 2012, an additional 61 individuals have been added to the distribution list resulting in a total of 107 individuals currently receiving notifications from the Commission.

Personnel Recruitment

Eighty-four individuals submitted applications for the Director of Information Technology position. Five candidates were interviewed on Friday, April 27. Betsy Hartman was selected for the position. She began employment with the Commission on May 17, 2012.

SC Bar Diversity Clerkship Program

Kristen Smalls has been selected to work with our agency through the SC Bar Diversity Clerkship program. Ms. Smalls began her six week summer internship with the Agency on Monday, May 7.

Potential Hearing Site Visit

Gary Cannon and Grant Duffield visited the Goose Creek Municipal Complex (GCMC) on May 10 to view the Municipal Courtroom and discuss its use as site for conducting hearings. The GCMC is 5 miles from Summerville. The City Manager agreed to allow us to use the courtroom depending upon its availability. At the present time it is available for our use on Wednesday's and Fridays. This venue has been added to Judicial's list of available sites.

GEAR Hearing

On May 7 Commissioner Beck conducted three hearings on unpaid fines owed the Commission for submission to the SC Department of Revenue GEAR program. Two cases were referred to the SC Department of Revenue and one case was continued until next month.

Commuted Values

Staff met with Dr. Erik Powers, Professor at the USC School of Finance, on May 11 to discuss the provisions set forth in Section §42-9-301 and Regulation R 67-1605 for calculating interest of commuted values of awards by the Commission.

Statutory/Regulatory Changes

H3111 was approved by the Senate Banking and Insurance Committee and is currently on the floor of the Senate.

R4286 (Mediation) –The Proposed Mediation Regulation was published in the April 27, 2012 *State Register*. The deadline for submitting comments is 5:00 p.m. on Monday, May 28, 2012. A Public Hearing is scheduled for May 29, 2012 at 10:30 a.m. A Special Business Meeting will follow the Public Hearing on May 29 to consider final approval of the proposed language for General Assembly Review.

R4283 (Oral Arguments) –A Public Hearing is scheduled for May 21, 2012 to receive public comment on the proposed change to Regulation 67-706.

Court Fines and Assessments Aging Report

The attached Fines and Assessments Aging Report reflects the number and amount of fines assessed for the period ending April 30, 2012.

Fines and Assessments Aging Report
Monthly Totals

6/15/2012

Summary All Debits:	August	Sept	Oct	Nov	Dec	Jan	Feb	Mar	April	May	June
Total	\$1,341,734	\$1,234,176	\$1,208,332	\$1,304,713	\$1,308,072	\$1,397,007	\$1,250,780	\$1,550,581	\$1,155,443		
Count	3,439	3,427	3,478	3,449	3,353	3,235	3,007	2,701	2,691		
> 91 Days	\$1,012,890	\$900,257	\$809,153	\$896,275	\$957,105	\$884,857	\$892,186	\$872,320	\$809,378		
Count	2,726	2,522	2,577	2,536	2,328	2,170	2,032	1,845	1,816		
91-90 Days	\$59,842	\$48,768	\$45,894	\$46,704	\$33,412	\$11,589	\$77,002	\$717,344	\$55,353		
Count	197	184	198	183	199	249	152	189	189		
91-60 Days	\$72,482	\$63,673	\$60,385	\$114,064	\$156,664	\$115,856	\$172,400	\$87,309	\$72,075		
Count	204	205	251	285	348	269	294	285	205		
< 30 days	\$96,582	\$201,536	\$173,060	\$244,934	\$187,690	\$284,577	\$143,183	\$485,851	\$130,737		
Count	572	452	463	490	481	547	528	372	434		
Of Fines Over 90 Days Old											
Orders	\$2,485	\$2,385	\$2,385	\$2,305	\$1,775	\$1,775	\$1,275	\$1,275	\$1,275		
Count	10	8	8	8	6	6	5	5	5		
Judgments	\$200,174	\$253,507	\$253,397	\$253,257	\$253,772	\$252,702	\$252,702	\$252,702	\$250,792		
Count	532	542	541	540	539	538	538	538	537		

Claims	July	August	Sept	Oct	Nov	Dec	Jan	Feb	Mar	April	May	June
Division Total	\$848,378	\$827,853	\$827,083	\$827,413	\$841,193	\$800,286	\$809,068	\$861,658	\$501,993	\$465,893		
Count	3,094	2,997	2,960	3,044	3,008	2,845	2,721	2,519	2,742	2,783		
> 91 Days	\$498,179	\$487,253	\$453,533	\$467,113	\$453,343	\$415,236	\$382,348	\$348,358	\$316,393	\$344,343		
Count	2,423	2,294	2,218	2,271	2,204	2,026	1,867	1,725	1,525	1,491		
61-90 Days	\$31,850	\$19,150	\$34,800	\$25,000	\$29,750	\$33,350	\$48,550	\$24,800	\$51,850	\$35,500		
Count	147	94	150	159	145	178	218	105	151	163		
31-60 Days	\$39,300	\$49,250	\$59,250	\$45,700	\$56,600	\$73,050	\$41,900	\$76,190	\$61,750	\$37,850		
Count	100	214	256	243	294	305	187	241	254	170		
< 30 days	\$78,850	\$92,350	\$79,500	\$99,600	\$101,900	\$75,850	\$139,300	\$102,590	\$72,000	\$77,900		
Count	344	399	385	401	438	389	498	443	312	356		
Of Fines Over 90 Days Old												
Orders	\$2,585	\$2,485	\$2,285	\$2,385	\$2,385	\$1,775	\$1,775	\$1,275	\$1,275	\$1,275		
Count	10	9	8	9	8	6	6	5	5	5		
Judgments	\$93,498	\$93,480	\$82,848	\$62,728	\$92,628	\$87,883	\$82,043	\$92,043	\$92,043	\$92,043		
Count	479	479	478	477	476	475	474	474	474	474		

Compliance	July	August	Sept	Oct	Nov	Dec	Jan	Feb	Mar	April	May	June
Division Total	\$502,184	\$446,615	\$513,772	\$480,808	\$581,730	\$538,987	\$697,243	\$841,155	\$877,515	\$606,050		
Count	173	173	196	199	228	234	259	244	249	249		
> 91 Days	\$449,098	\$398,741	\$386,445	\$364,597	\$363,722	\$378,688	\$429,054	\$469,979	\$480,372	\$520,327		
Count	143	127	131	135	134	142	160	178	181	193		
61-90 Days	\$7,380	\$16,873	\$13,333	\$6,710	\$19,036	\$52,678	\$62,885	\$46,212	\$63,606	\$15,800		
Count	5	12	10	10	15	18	30	18	28	9		
31-60 Days	\$31,637	\$36,477	\$19,676	\$31,993	\$55,977	\$88,641	\$61,452	\$98,682	\$19,388	\$31,084		
Count	14	11	10	22	23	41	19	34	10	17		
< 30 days	\$13,109	\$43,630	\$114,259	\$77,099	\$143,225	\$80,583	\$143,841	\$22,802	\$409,980	\$41,783		
Count	1	22	46	32	58	33	50	10	30	29		
Of Fines Over 90 Days Old												
Orders												
Count												
Judgments	\$106,706	\$158,129	\$160,659	\$160,859	\$160,559	\$160,659	\$160,659	\$160,659	\$160,659	\$152,749		
Count	53	63	64	64	64	64	64	64	64	63		

Coverage	July	August	Sept	Oct	Nov	Dec	Jan	Feb	Mar	April	May	June
Division Total	\$64,650	\$60,400	\$86,700	\$53,300	\$33,900	\$86,250	\$67,650	\$53,200	\$55,000	\$87,100		
Count	170	174	174	168	123	210	182	187	149	207		
> 90 Days	\$42,450	\$51,500	\$56,500	\$33,100	\$54,500	\$47,450	\$48,150	\$41,200	\$43,800	\$48,000		
Count	113	123	123	116	101	101	55	77	80	86		
61-90 Days	\$18,200	\$200	\$0	\$3,400	\$200	\$800	\$0	\$5,200	\$1,600	\$2,400		
Count	42	1	0	7	1	4	0	31	8	12		
31-60 Days	\$1,000	\$0	\$4,000	\$1,400	\$1,200	\$0	\$12,400	\$5,400	\$5,600	\$2,800		
Count	6	0	20	7	6	0	62	17	28	14		
< 30 days	\$1,400	\$8,900	\$6,200	\$5,400	\$0	\$21,000	\$7,000	\$12,400	\$4,000	\$16,500		
Count	7	43	31	27	3	156	39	62	23	95		
Of Fines Over 90 Days Old												
Orders												
Collm												
Judgments												
Count												
Judicial	July	August	Sept	Oct	Nov	Dec	Jan	Feb	Mar	April	May	June
Division Total	\$20,400	\$25,471	\$26,630	\$26,020	\$25,459	\$29,547	\$26,146	\$24,757	\$25,475	\$23,400		
Count	62	58	67	67	62	68	63	57	61	56		
> 90 Days	\$22,263	\$23,378	\$23,778	\$24,353	\$24,710	\$25,426	\$25,428	\$24,039	\$23,755	\$22,009		
Count	47	46	49	53	54	58	59	52	49	45		
61-90 Days	\$1,302	\$544	\$874	\$544	\$718	\$287	\$144	\$0	\$287	\$287		
Count	5	2	4	2	6	2	1	0	2	2		
31-60 Days	\$944	\$718	\$857	\$1,293	\$287	\$144	\$144	\$287	\$431	\$531		
Count	2	5	3	9	2	1	1	2	3	4		
< 30 days	\$2,053	\$831	\$1,960	\$431	\$144	\$807	\$431	\$431	\$902	\$675		
Count	10	2	11	3	1	4	3	3	7	4		